



## A PIEDI WHITE 100X100

REFERENCE	SIZE (cm)	THICKNESS (mm)	GROUP
<b>A041247</b>	100X100	9,90	PC BIA UGL

### DIMENSIONS AND SURFACE PROPERTIES

Size, thickness, side straightness, flatness, orthogonality	UNE-EN 14411	It accomplished all requirements
---	--------------	----------------------------------

### PHYSICAL PROPERTIES

Water absorption capacity	EN ISO 10545-03	< 0,5%
Flexion resistance	EN ISO 10545-04	=> 49 N/mm <sup>2</sup>
Deep abrasion resistance	EN ISO 10545-06	117
Thermal shock resistance	EN ISO 10545-09	It stands the test
Frost resistance	EN ISO 10545-12	It stands the test

### CHEMICAL PROPERTIES

Resistance to acids	EN ISO 10545-13	GLA
Resistance to alkalis	EN ISO 10545-13	GLA
Resistance to cleaning products	EN ISO 10545-13	GA
Resistance to chemical products in swimming pool water	EN ISO 10545-13	GA
Stains resistance	EN ISO 10545-14	5

### ANTI-SLIP CHARACTERISTICS

Slip resistance (Rd)	UNE-EN 16165-C	Class 2
----------------------	----------------	---------

# CARMEN

true tiles

## OCCHIATA WHITE 9,7X19,8X9,9

REFERENCE	SIZE (cm)	THICKNESS (mm)	GROUP
<b>A041300</b>	9,7X19,8X9,9	95,90	EXTRUSI



### DIMENSIONS AND SURFACE PROPERTIES

Size, thickness, side straightness, flatness, orthogonality UNE-EN 14411 It accomplished all requirements

### PHYSICAL PROPERTIES

Water absorption capacity	EN ISO 10545-03	=1.5%
Flexion resistance	EN ISO 10545-04	0.00 <sup>2</sup>
Thermal shock resistance	EN ISO 10545-09	It stands the test
Frost resistance	EN ISO 10545-12	It stands the test

### CHEMICAL PROPERTIES

Resistance to acids	EN ISO 10545-13	GA
Resistance to alcalis	EN ISO 10545-13	GA
Resistance to cleaning products	EN ISO 10545-13	GA
Resistance to chemical products in swimming pool water	EN ISO 10545-13	GA

# CARMEN

true tiles

## OCCHIATA WHITE 4,6X19,8X9,9

REFERENCE	SIZE (cm)	THICKNESS (mm)	GROUP
<b>A041305</b>	4,6X19,8X9,9	46,10	EXTRUSI



### DIMENSIONS AND SURFACE PROPERTIES

Size, thickness, side straightness, flatness, orthogonality UNE-EN 14411 It accomplished all requirements

### PHYSICAL PROPERTIES

Water absorption capacity	EN ISO 10545-03	=1.5%
Flexion resistance	EN ISO 10545-04	0.00 <sup>2</sup>
Thermal shock resistance	EN ISO 10545-09	It stands the test
Frost resistance	EN ISO 10545-12	It stands the test

### CHEMICAL PROPERTIES

Resistance to acids	EN ISO 10545-13	GA
Resistance to alcalis	EN ISO 10545-13	GA
Resistance to cleaning products	EN ISO 10545-13	GA
Resistance to chemical products in swimming pool water	EN ISO 10545-13	GA



## A PIEDI GREY 100X100

REFERENCE	SIZE (cm)	THICKNESS (mm)	GROUP
<b>A041244</b>	100X100	9,90	PC BIA UGL

### DIMENSIONS AND SURFACE PROPERTIES

Size, thickness, side straightness, flatness, orthogonality	UNE-EN 14411	It accomplished all requirements
---	--------------	----------------------------------

### PHYSICAL PROPERTIES

Water absorption capacity	EN ISO 10545-03	< 0,5%
Flexion resistance	EN ISO 10545-04	=> 49 N/mm <sup>2</sup>
Deep abrasion resistance	EN ISO 10545-06	117
Thermal shock resistance	EN ISO 10545-09	It stands the test
Frost resistance	EN ISO 10545-12	It stands the test

### CHEMICAL PROPERTIES

Resistance to acids	EN ISO 10545-13	GLA
Resistance to alcalis	EN ISO 10545-13	GLA
Resistance to cleaning products	EN ISO 10545-13	GA
Resistance to chemical products in swimming pool water	EN ISO 10545-13	GA
Stains resistance	EN ISO 10545-14	5

### ANTI-SLIP CHARACTERISTICS

Slip resistance (Rd)	UNE-EN 16165-C	Class 2
----------------------	----------------	---------

# CARMEN

true tiles

## OCCHIATA GREY 9,7X19,8X9,9

REFERENCE	SIZE (cm)	THICKNESS (mm)	GROUP
<b>A041297</b>	9,7X19,8X9,9	95,90	EXTRUSI



### DIMENSIONS AND SURFACE PROPERTIES

Size, thickness, side straightness, flatness, orthogonality UNE-EN 14411 It accomplished all requirements

### PHYSICAL PROPERTIES

Water absorption capacity	EN ISO 10545-03	=1.5%
Flexion resistance	EN ISO 10545-04	0.00 <sup>2</sup>
Thermal shock resistance	EN ISO 10545-09	It stands the test
Frost resistance	EN ISO 10545-12	It stands the test

### CHEMICAL PROPERTIES

Resistance to acids	EN ISO 10545-13	GA
Resistance to alcalis	EN ISO 10545-13	GA
Resistance to cleaning products	EN ISO 10545-13	GA
Resistance to chemical products in swimming pool water	EN ISO 10545-13	GA

# CARMEN

true tiles

## OCCHIATA GREY 4,6X19,8X9,9

REFERENCE	SIZE (cm)	THICKNESS (mm)	GROUP
<b>A041302</b>	4,6X19,8X9,9	46,20	EXTRUSI



### DIMENSIONS AND SURFACE PROPERTIES

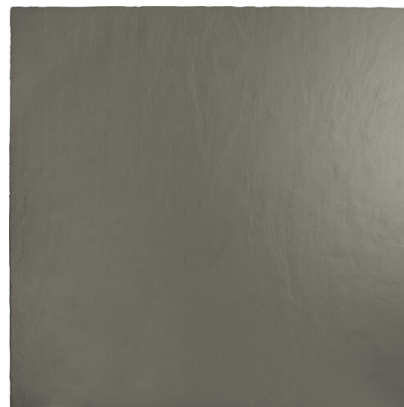
Size, thickness, side straightness, flatness, orthogonality UNE-EN 14411 It accomplished all requirements

### PHYSICAL PROPERTIES

Water absorption capacity	EN ISO 10545-03	=1.5%
Flexion resistance	EN ISO 10545-04	0.00 <sup>2</sup>
Thermal shock resistance	EN ISO 10545-09	It stands the test
Frost resistance	EN ISO 10545-12	It stands the test

### CHEMICAL PROPERTIES

Resistance to acids	EN ISO 10545-13	GA
Resistance to alcalis	EN ISO 10545-13	GA
Resistance to cleaning products	EN ISO 10545-13	GA
Resistance to chemical products in swimming pool water	EN ISO 10545-13	GA



## A PIEDI DARK GREEN 100X100

REFERENCE	SIZE (cm)	THICKNESS (mm)	GROUP
<b>A041246</b>	100X100	10,00	PC BIA UGL

### DIMENSIONS AND SURFACE PROPERTIES

Size, thickness, side straightness, flatness, orthogonality	UNE-EN 14411	It accomplished all requirements
---	--------------	----------------------------------

### PHYSICAL PROPERTIES

Water absorption capacity	EN ISO 10545-03	< 0,5%
Flexion resistance	EN ISO 10545-04	=> 49 N/mm <sup>2</sup>
Deep abrasion resistance	EN ISO 10545-06	117
Thermal shock resistance	EN ISO 10545-09	It stands the test
Frost resistance	EN ISO 10545-12	It stands the test

### CHEMICAL PROPERTIES

Resistance to acids	EN ISO 10545-13	GLA
Resistance to alkalis	EN ISO 10545-13	GLA
Resistance to cleaning products	EN ISO 10545-13	GA
Resistance to chemical products in swimming pool water	EN ISO 10545-13	GA
Stains resistance	EN ISO 10545-14	5

### ANTI-SLIP CHARACTERISTICS

Slip resistance (Rd)	UNE-EN 16165-C	Class 2
----------------------	----------------	---------

# CARMEN

true tiles

## OCCHIATA DARK GREEN

### 9,7X19,8X9,9

REFERENCE	SIZE (cm)	THICKNESS (mm)	GROUP
<b>A041299</b>	9,7X19,8X9,9	97,00	EXTRUSI



#### DIMENSIONS AND SURFACE PROPERTIES

Size, thickness, side straightness, flatness, orthogonality	UNE-EN 14411	It accomplished all requirements
---	--------------	----------------------------------

#### PHYSICAL PROPERTIES

Water absorption capacity	EN ISO 10545-03	=1.5%
Flexion resistance	EN ISO 10545-04	0.00 <sup>2</sup>
Thermal shock resistance	EN ISO 10545-09	It stands the test
Frost resistance	EN ISO 10545-12	It stands the test

#### CHEMICAL PROPERTIES

Resistance to acids	EN ISO 10545-13	GA
Resistance to alcalis	EN ISO 10545-13	GA
Resistance to cleaning products	EN ISO 10545-13	GA
Resistance to chemical products in swimming pool water	EN ISO 10545-13	GA



# CARMEN

true tiles

## OCCHIATA DARK GREEN

### 4,6X19,8X9,9

REFERENCE	SIZE (cm)	THICKNESS (mm)	GROUP
<b>A041304</b>	4,6X19,8X9,9	46,10	EXTRUSI



#### DIMENSIONS AND SURFACE PROPERTIES

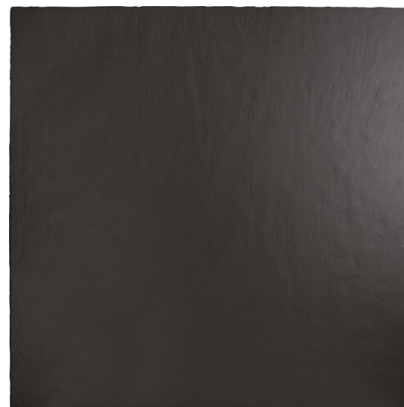
Size, thickness, side straightness, flatness, orthogonality	UNE-EN 14411	It accomplished all requirements
---	--------------	----------------------------------

#### PHYSICAL PROPERTIES

Water absorption capacity	EN ISO 10545-03	=1.5%
Flexion resistance	EN ISO 10545-04	0.00 <sup>2</sup>
Thermal shock resistance	EN ISO 10545-09	It stands the test
Frost resistance	EN ISO 10545-12	It stands the test

#### CHEMICAL PROPERTIES

Resistance to acids	EN ISO 10545-13	GA
Resistance to alcalis	EN ISO 10545-13	GA
Resistance to cleaning products	EN ISO 10545-13	GA
Resistance to chemical products in swimming pool water	EN ISO 10545-13	GA



## A PIEDI BLACK 100X100

REFERENCE	SIZE (cm)	THICKNESS (mm)	GROUP
<b>A041245</b>	100X100	10,40	PC BIA UGL

### DIMENSIONS AND SURFACE PROPERTIES

Size, thickness, side straightness, flatness, orthogonality      UNE-EN 14411      It accomplished all requirements

### PHYSICAL PROPERTIES

Water absorption capacity	EN ISO 10545-03	< 0,5%
Flexion resistance	EN ISO 10545-04	=> 49 N/mm <sup>2</sup>
Deep abrasion resistance	EN ISO 10545-06	117
Thermal shock resistance	EN ISO 10545-09	It stands the test
Frost resistance	EN ISO 10545-12	It stands the test

### CHEMICAL PROPERTIES

Resistance to acids	EN ISO 10545-13	GLA
Resistance to alcalis	EN ISO 10545-13	GLA
Resistance to cleaning products	EN ISO 10545-13	GA
Resistance to chemical products in swimming pool water	EN ISO 10545-13	GA
Stains resistance	EN ISO 10545-14	5

### ANTI-SLIP CHARACTERISTICS

Slip resistance (Rd)      UNE-EN 16165-C      Class 2

# CARMEN

true tiles

## OCCHIATA BLACK 9,7X19,8X9,9

REFERENCE	SIZE (cm)	THICKNESS (mm)	GROUP
<b>A041298</b>	9,7X19,8X9,9	9,70	EXTRUSI



### DIMENSIONS AND SURFACE PROPERTIES

Size, thickness, side straightness, flatness, orthogonality UNE-EN 14411 It accomplished all requirements

### PHYSICAL PROPERTIES

Water absorption capacity	EN ISO 10545-03	=1.5%
Flexion resistance	EN ISO 10545-04	0.00 <sup>2</sup>
Thermal shock resistance	EN ISO 10545-09	It stands the test
Frost resistance	EN ISO 10545-12	It stands the test

### CHEMICAL PROPERTIES

Resistance to acids	EN ISO 10545-13	GA
Resistance to alcalis	EN ISO 10545-13	GA
Resistance to cleaning products	EN ISO 10545-13	GA
Resistance to chemical products in swimming pool water	EN ISO 10545-13	GA

# CARMEN

true tiles

## OCCHIATA BLACK 4,6X19,8X9,9

REFERENCE	SIZE (cm)	THICKNESS (mm)	GROUP
<b>A041303</b>	4,6X19,8X9,9	45,00	EXTRUSI



### DIMENSIONS AND SURFACE PROPERTIES

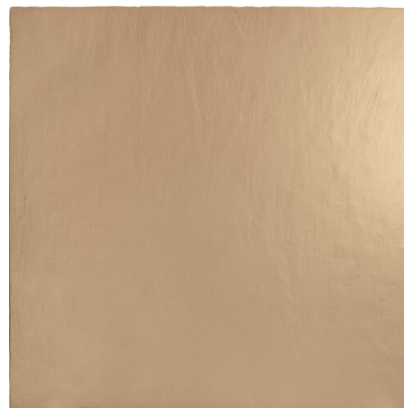
Size, thickness, side straightness, flatness, orthogonality UNE-EN 14411 It accomplished all requirements

### PHYSICAL PROPERTIES

Water absorption capacity	EN ISO 10545-03	=1.5%
Flexion resistance	EN ISO 10545-04	0.00 <sup>2</sup>
Thermal shock resistance	EN ISO 10545-09	It stands the test
Frost resistance	EN ISO 10545-12	It stands the test

### CHEMICAL PROPERTIES

Resistance to acids	EN ISO 10545-13	GA
Resistance to alcalis	EN ISO 10545-13	GA
Resistance to cleaning products	EN ISO 10545-13	GA
Resistance to chemical products in swimming pool water	EN ISO 10545-13	GA



## A PIEDI NOUGAT 100X100

REFERENCE	SIZE (cm)	THICKNESS (mm)	GROUP
<b>A041351</b>	100X100	10,00	PC BIA UGL

### DIMENSIONS AND SURFACE PROPERTIES

Size, thickness, side straightness, flatness, orthogonality      UNE-EN 14411      It accomplished all requirements

### PHYSICAL PROPERTIES

Water absorption capacity	EN ISO 10545-03	< 0,5%
Flexion resistance	EN ISO 10545-04	=> 49 N/mm <sup>2</sup>
Deep abrasion resistance	EN ISO 10545-06	117
Thermal shock resistance	EN ISO 10545-09	It stands the test
Frost resistance	EN ISO 10545-12	It stands the test

### CHEMICAL PROPERTIES

Resistance to acids	EN ISO 10545-13	GLA
Resistance to alcalis	EN ISO 10545-13	GLA
Resistance to cleaning products	EN ISO 10545-13	GA
Resistance to chemical products in swimming pool water	EN ISO 10545-13	GA
Stains resistance	EN ISO 10545-14	5

### ANTI-SLIP CHARACTERISTICS

Slip resistance (Rd)      UNE-EN 16165-C      Class 2

# CARMEN

true tiles

## OCCHIATA NATURAL 9,7X19,8X9,9

REFERENCE	SIZE (cm)	THICKNESS (mm)	GROUP
<b>A041360</b>	9,7X19,8X9,9	96,40	EXTRUSI



### DIMENSIONS AND SURFACE PROPERTIES

Size, thickness, side straightness, flatness, orthogonality	UNE-EN 14411	It accomplished all requirements
---	--------------	----------------------------------

### PHYSICAL PROPERTIES

Water absorption capacity	EN ISO 10545-03	=1.5%
Flexion resistance	EN ISO 10545-04	0.00 <sup>2</sup>
Thermal shock resistance	EN ISO 10545-09	It stands the test
Frost resistance	EN ISO 10545-12	It stands the test

### CHEMICAL PROPERTIES

Resistance to acids	EN ISO 10545-13	GA
Resistance to alcalis	EN ISO 10545-13	GA
Resistance to cleaning products	EN ISO 10545-13	GA
Resistance to chemical products in swimming pool water	EN ISO 10545-13	GA

# CARMEN

true tiles

## OCCHIATA NATURAL 4,6X19,8X9,9

REFERENCE	SIZE (cm)	THICKNESS (mm)	GROUP
<b>A041361</b>	4,6X19,8X9,9	45,00	EXTRUSI



### DIMENSIONS AND SURFACE PROPERTIES

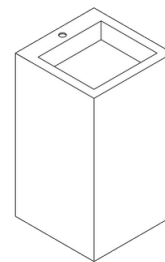
Size, thickness, side straightness, flatness, orthogonality UNE-EN 14411 It accomplished all requirements

### PHYSICAL PROPERTIES

Water absorption capacity	EN ISO 10545-03	=1.5%
Flexion resistance	EN ISO 10545-04	0.00 <sup>2</sup>
Thermal shock resistance	EN ISO 10545-09	It stands the test
Frost resistance	EN ISO 10545-12	It stands the test

### CHEMICAL PROPERTIES

Resistance to acids	EN ISO 10545-13	GA
Resistance to alcalis	EN ISO 10545-13	GA
Resistance to cleaning products	EN ISO 10545-13	GA
Resistance to chemical products in swimming pool water	EN ISO 10545-13	GA



## LAVABO DE PIE ROMA

REFERENCE	SIZE (cm)	THICKNESS (mm)	GROUP
<b>A040867</b>		0,00	PC BIA GL

### DIMENSIONS AND SURFACE PROPERTIES

### PHYSICAL PROPERTIES

Frost resistance

EN ISO 10545-12

It stands the test

### CHEMICAL PROPERTIES