

KINSTONE STEAM RECT 120X280

REFERENCE	SIZE (cm)	THICKNESS (mm)	GROUP
A041204	120X280	6,50	PC BIA GL



DIMENSIONS AND SURFACE PROPERTIES

Size, thickness, side straightness, flatness, orthogonality	UNE-EN 14411	It accomplished all requirements
---	--------------	----------------------------------

PHYSICAL PROPERTIES

Water absorption capacity	EN ISO 10545-03	< 0,5%
Flexion resistance	EN ISO 10545-04	=> 50 N/mm ²
Abrasion resistance (glazed Ceramic)	EN ISO 10545-07	III
Cracking resistance	EN ISO 10545-11	It stands the test
Frost resistance	EN ISO 10545-12	It stands the test

CHEMICAL PROPERTIES

Resistance to acids	EN ISO 10545-13	GLA
Resistance to alcalis	EN ISO 10545-13	GLA
Resistance to cleaning products	EN ISO 10545-13	GA
Resistance to chemical products in swimming pool water	EN ISO 10545-13	GA
Stains resistance	EN ISO 10545-14	5

KINSTONE STEAM RECT 60X120

REFERENCE	SIZE (cm)	THICKNESS (mm)	GROUP
A040378	60X120	8,70	PC BIA GL



DIMENSIONS AND SURFACE PROPERTIES

Size, thickness, side straightness, flatness, orthogonality	UNE-EN 14411	It accomplished all requirements
---	--------------	----------------------------------

PHYSICAL PROPERTIES

Water absorption capacity	EN ISO 10545-03	< 0,5%
Flexion resistance	EN ISO 10545-04	=> 35 N/mm ²
Abrasion resistance (glazed Ceramic)	EN ISO 10545-07	IV
Thermal shock resistance	EN ISO 10545-09	It stands the test
Cracking resistance	EN ISO 10545-11	It stands the test
Frost resistance	EN ISO 10545-12	It stands the test

CHEMICAL PROPERTIES

Resistance to acids	EN ISO 10545-13	GHB
Resistance to alcalis	EN ISO 10545-13	GHB
Resistance to cleaning products	EN ISO 10545-13	GHB
Resistance to chemical products in swimming pool water	EN ISO 10545-13	GHB
Stains resistance	EN ISO 10545-14	5

ANTI-SLIP CHARACTERISTICS

Slip resistance (Rd)	UNE-EN 16165-C	0.00
----------------------	----------------	------

ANTI-SLIP KINSTONE STEAM RECT 60X120

REFERENCE	SIZE (cm)	THICKNESS (mm)	GROUP
A040383	60X120	9,10	PC BIA GL



DIMENSIONS AND SURFACE PROPERTIES

Size, thickness, side straightness, flatness, orthogonality	UNE-EN 14411	It accomplished all requirements
---	--------------	----------------------------------

PHYSICAL PROPERTIES

Water absorption capacity	EN ISO 10545-03	0,5% < E < 3%
Flexion resistance	EN ISO 10545-04	=> 35 N/mm ²
Abrasion resistance (glazed Ceramic)	EN ISO 10545-07	IV
Thermal shock resistance	EN ISO 10545-09	It stands the test
Cracking resistance	EN ISO 10545-11	It stands the test
Frost resistance	EN ISO 10545-12	It stands the test

CHEMICAL PROPERTIES

Resistance to acids	EN ISO 10545-13	GHB
Resistance to alcalis	EN ISO 10545-13	GHB
Resistance to cleaning products	EN ISO 10545-13	GHB
Resistance to chemical products in swimming pool water	EN ISO 10545-13	GHB
Stains resistance	EN ISO 10545-14	5

ANTI-SLIP CHARACTERISTICS

Slip resistance (Rd)	UNE-EN 16165-C	Class 3
Slip resistance (R)	EN 16165-B	R11
Slip resistance (barefeet)	EN 16165-A	B



KINSTONE STEAM RECT 90X90

REFERENCE	SIZE (cm)	THICKNESS (mm)	GROUP
A040695	90X90	9,30	PC BIA GL

DIMENSIONS AND SURFACE PROPERTIES

Size, thickness, side straightness, flatness, orthogonality	UNE-EN 14411	It accomplished all requirements
---	--------------	----------------------------------

PHYSICAL PROPERTIES

Water absorption capacity	EN ISO 10545-03	< 0,5%
Flexion resistance	EN ISO 10545-04	=> 35 N/mm ²
Abrasion resistance (glazed Ceramic)	EN ISO10545-07	IV
Thermal shock resistance	EN ISO 10545-09	It stands the test
Cracking resistance	EN ISO 10545-11	It stands the test
Frost resistance	EN ISO 10545-12	It stands the test

CHEMICAL PROPERTIES

Resistance to acids	EN ISO 10545-13	GHB
Resistance to alcalis	EN ISO 10545-13	GHB
Resistance to cleaning products	EN ISO 10545-13	GHB
Resistance to chemical products in swimming pool water	EN ISO 10545-13	GHB
Stains resistance	EN ISO 10545-14	5

ANTI-SLIP KINSTONE STEAM RECT 90X90



REFERENCE	SIZE (cm)	THICKNESS (mm)	GROUP
A040699	90X90	9,40	PC BIA GL

DIMENSIONS AND SURFACE PROPERTIES

Size, thickness, side straightness, flatness, orthogonality	UNE-EN 14411	It accomplished all requirements
---	--------------	----------------------------------

PHYSICAL PROPERTIES

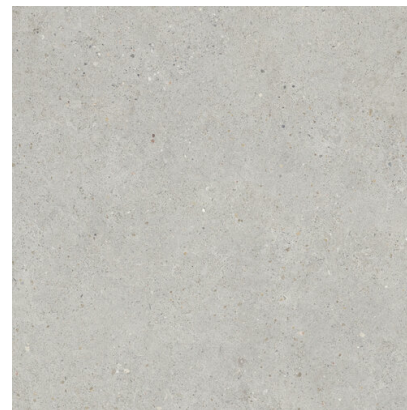
Water absorption capacity	EN ISO 10545-03	< 0,5%
Flexion resistance	EN ISO 10545-04	=> 35 N/mm ²
Abrasion resistance (glazed Ceramic)	EN ISO10545-07	IV
Thermal shock resistance	EN ISO 10545-09	It stands the test
Cracking resistance	EN ISO 10545-11	It stands the test
Frost resistance	EN ISO 10545-12	It stands the test

CHEMICAL PROPERTIES

Resistance to acids	EN ISO 10545-13	GHB
Resistance to alcalis	EN ISO 10545-13	GHB
Resistance to cleaning products	EN ISO 10545-13	GHB
Resistance to chemical products in swimming pool water	EN ISO 10545-13	GHB
Stains resistance	EN ISO 10545-14	5

ANTI-SLIP CHARACTERISTICS

Slip resistance (Rd)	UNE-EN 16165-C	Class 3
Slip resistance (R)	EN 16165-B	R11
Slip resistance (barefeet)	EN 16165-A	B



KINSTONE STEAM RECT 60X60

REFERENCE	SIZE (cm)	THICKNESS (mm)	GROUP
A040419	60X60	9,50	PC BIA GL

DIMENSIONS AND SURFACE PROPERTIES

PHYSICAL PROPERTIES

Frost resistance

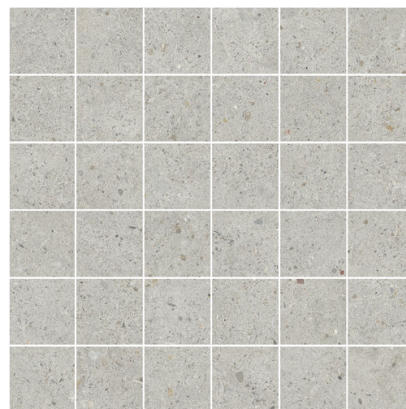
EN ISO 10545-12

It stands the test

CHEMICAL PROPERTIES

MOSAICO KINSTONE STEAM 30X30 (5X5)

REFERENCE	SIZE (cm)	THICKNESS (mm)	GROUP
A040412	30X30	9,40	PC BIA GL



DIMENSIONS AND SURFACE PROPERTIES

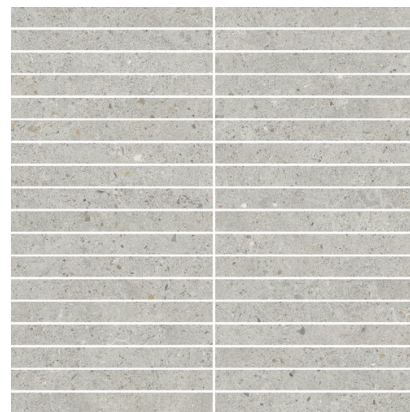
PHYSICAL PROPERTIES

Frost resistance

EN ISO 10545-12

It stands the test

CHEMICAL PROPERTIES



M-STICK KINSTONE STEAM 30X30

REFERENCE	SIZE (cm)	THICKNESS (mm)	GROUP
A040405	30X30	9,10	PC BIA GL

DIMENSIONS AND SURFACE PROPERTIES

PHYSICAL PROPERTIES

Frost resistance

EN ISO 10545-12

It stands the test

CHEMICAL PROPERTIES

ROD. KINSTONE STEAM 8X60

REFERENCE	SIZE (cm)	THICKNESS (mm)	GROUP
A040907	8X60	8,20	PC BIA GL



DIMENSIONS AND SURFACE PROPERTIES

Size, thickness, side straightness, flatness, orthogonality UNE-EN 14411 It accomplished all requirements

PHYSICAL PROPERTIES

Water absorption capacity	EN ISO 10545-03	< 0,5%
Flexion resistance	EN ISO 10545-04	=> 35 N/mm ²
Thermal shock resistance	EN ISO 10545-09	It stands the test
Cracking resistance	EN ISO 10545-11	It stands the test
Frost resistance	EN ISO 10545-12	It stands the test

CHEMICAL PROPERTIES

Stains resistance EN ISO 10545-14 5

PELDAÑO RECTO ANT C3 KINSTONE STEAM 33X120



REFERENCE	SIZE (cm)	THICKNESS (mm)	GROUP
A040759	33X120	32,50	EXTRUSI

DIMENSIONS AND SURFACE PROPERTIES

Size, thickness, side straightness, flatness, orthogonality	UNE-EN 14411	It accomplished all requirements
---	--------------	----------------------------------

PHYSICAL PROPERTIES

Water absorption capacity	EN ISO 10545-03	0,5 %= Eb=3%
Flexion resistance	EN ISO 10545-04	=> 30 N/mm ²
Abrasion resistance (glazed Ceramic)	EN ISO10545-07	IV
Thermal shock resistance	EN ISO 10545-09	It stands the test
Cracking resistance	EN ISO 10545-11	It stands the test
Frost resistance	EN ISO 10545-12	It stands the test

CHEMICAL PROPERTIES

Resistance to acids	EN ISO 10545-13	GLA
Resistance to alcalis	EN ISO 10545-13	GLA
Resistance to cleaning products	EN ISO 10545-13	GA
Resistance to chemical products in swimming pool water	EN ISO 10545-13	GA
Stains resistance	EN ISO 10545-14	5

ANTI-SLIP CHARACTERISTICS

Slip resistance (Rd)	UNE-EN 16165-C	Class 3
Slip resistance (R)	EN 16165-B	R11
Slip resistance (barefeet)	EN 16165-A	C

PELDAÑO RECTO C1 KINSTONE STEAM 33X120

REFERENCE	SIZE (cm)	THICKNESS (mm)	GROUP
A040755	33X120	32,60	EXTRUSI



DIMENSIONS AND SURFACE PROPERTIES

Size, thickness, side straightness, flatness, orthogonality	UNE-EN 14411	It accomplished all requirements
---	--------------	----------------------------------

PHYSICAL PROPERTIES

Water absorption capacity	EN ISO 10545-03	0,5 %= Eb=3%
Flexion resistance	EN ISO 10545-04	=> 30 N/mm ²
Abrasion resistance (glazed Ceramic)	EN ISO10545-07	III
Thermal shock resistance	EN ISO 10545-09	It stands the test
Cracking resistance	EN ISO 10545-11	It stands the test
Frost resistance	EN ISO 10545-12	It stands the test

CHEMICAL PROPERTIES

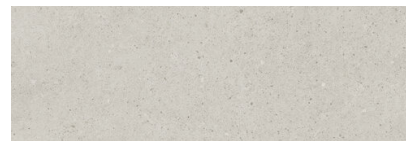
Resistance to acids	EN ISO 10545-13	GLA
Resistance to alcalis	EN ISO 10545-13	GLA
Resistance to cleaning products	EN ISO 10545-13	GA
Resistance to chemical products in swimming pool water	EN ISO 10545-13	GA
Stains resistance	EN ISO 10545-14	5

ANTI-SLIP CHARACTERISTICS

Slip resistance (Rd)	UNE-EN 16165-C	0.00
----------------------	----------------	------

KINSTONE STEAM RECT 30X90

REFERENCE	SIZE (cm)	THICKNESS (mm)	GROUP
A040387	30X90	10,50	REVESTI



DIMENSIONS AND SURFACE PROPERTIES

Size, thickness, side straightness, flatness, orthogonality UNE-EN 14411 It accomplished all requirements

PHYSICAL PROPERTIES

Water absorption capacity	EN ISO 10545-03	>10%
Flexion resistance	EN ISO 10545-04	=> 18 N/mm ²
Thermal shock resistance	EN ISO 10545-09	It stands the test
Cracking resistance	EN ISO 10545-11	It stands the test
Frost resistance	EN ISO 10545-12	0.00

CHEMICAL PROPERTIES

Resistance to acids	EN ISO 10545-13	GLA
Resistance to alcalis	EN ISO 10545-13	GHA
Resistance to cleaning products	EN ISO 10545-13	GA
Resistance to chemical products in swimming pool water	EN ISO 10545-13	GA
Stains resistance	EN ISO 10545-14	5

SKETCH MIX STEAM RECT 30X90

REFERENCE	SIZE (cm)	THICKNESS (mm)	GROUP
A040394	30X90	10,30	REVESTI



DIMENSIONS AND SURFACE PROPERTIES

Size, thickness, side straightness, flatness, orthogonality UNE-EN 14411 It accomplished all requirements

PHYSICAL PROPERTIES

Water absorption capacity	EN ISO 10545-03	>10%
Flexion resistance	EN ISO 10545-04	=> 18 N/mm ²
Thermal shock resistance	EN ISO 10545-09	It stands the test
Cracking resistance	EN ISO 10545-11	It stands the test
Frost resistance	EN ISO 10545-12	0.00

CHEMICAL PROPERTIES

Resistance to acids	EN ISO 10545-13	GLA
Resistance to alcalis	EN ISO 10545-13	GHA
Resistance to cleaning products	EN ISO 10545-13	GA
Resistance to chemical products in swimming pool water	EN ISO 10545-13	GA
Stains resistance	EN ISO 10545-14	5

SHOJI STEAM RECT 30X90

REFERENCE	SIZE (cm)	THICKNESS (mm)	GROUP
A040398	30X90	10,60	REVESTI



DIMENSIONS AND SURFACE PROPERTIES

Size, thickness, side straightness, flatness, orthogonality UNE-EN 14411 It accomplished all requirements

PHYSICAL PROPERTIES

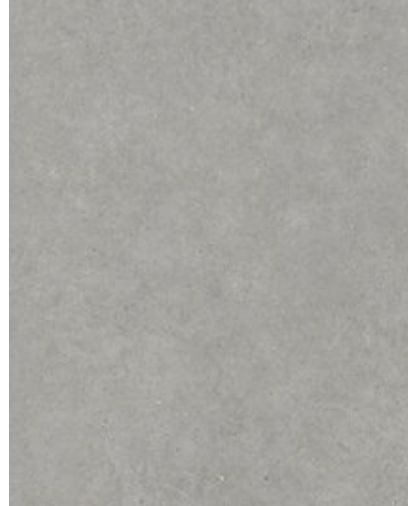
Water absorption capacity	EN ISO 10545-03	>10%
Flexion resistance	EN ISO 10545-04	=> 18 N/mm ²
Thermal shock resistance	EN ISO 10545-09	It stands the test
Cracking resistance	EN ISO 10545-11	It stands the test
Frost resistance	EN ISO 10545-12	0.00

CHEMICAL PROPERTIES

Resistance to acids	EN ISO 10545-13	GLA
Resistance to alcalis	EN ISO 10545-13	GHA
Resistance to cleaning products	EN ISO 10545-13	GA
Resistance to chemical products in swimming pool water	EN ISO 10545-13	GA
Stains resistance	EN ISO 10545-14	5

KINSTONE MIST RECT 120X280

REFERENCE	SIZE (cm)	THICKNESS (mm)	GROUP
A041203	120X280	6,50	PC BIA GL



DIMENSIONS AND SURFACE PROPERTIES

Size, thickness, side straightness, flatness, orthogonality	UNE-EN 14411	It accomplished all requirements
---	--------------	----------------------------------

PHYSICAL PROPERTIES

Water absorption capacity	EN ISO 10545-03	< 0,5%
Flexion resistance	EN ISO 10545-04	=> 50 N/mm ²
Abrasion resistance (glazed Ceramic)	EN ISO 10545-07	IV
Cracking resistance	EN ISO 10545-11	It stands the test
Frost resistance	EN ISO 10545-12	It stands the test

CHEMICAL PROPERTIES

Resistance to acids	EN ISO 10545-13	GLA
Resistance to alkalis	EN ISO 10545-13	GLA
Resistance to cleaning products	EN ISO 10545-13	GA
Resistance to chemical products in swimming pool water	EN ISO 10545-13	GA
Stains resistance	EN ISO 10545-14	5

KINSTONE MIST RECT 60X120

REFERENCE	SIZE (cm)	THICKNESS (mm)	GROUP
A040379	60X120	9,00	PC BIA GL



DIMENSIONS AND SURFACE PROPERTIES

Size, thickness, side straightness, flatness, orthogonality UNE-EN 14411 It accomplished all requirements

PHYSICAL PROPERTIES

Water absorption capacity	EN ISO 10545-03	< 0,5%
Flexion resistance	EN ISO 10545-04	=> 35 N/mm ²
Abrasion resistance (glazed Ceramic)	EN ISO10545-07	IV
Thermal shock resistance	EN ISO 10545-09	It stands the test
Cracking resistance	EN ISO 10545-11	It stands the test
Frost resistance	EN ISO 10545-12	It stands the test

CHEMICAL PROPERTIES

Resistance to acids	EN ISO 10545-13	GHB
Resistance to alcalis	EN ISO 10545-13	GHB
Resistance to cleaning products	EN ISO 10545-13	GHB
Resistance to chemical products in swimming pool water	EN ISO 10545-13	GHB
Stains resistance	EN ISO 10545-14	5

ANTI-SLIP CHARACTERISTICS

Slip resistance (Rd) UNE-EN 16165-C 0.00

ANTI-SLIP KINSTONE MIST RECT 60X120

REFERENCE	SIZE (cm)	THICKNESS (mm)	GROUP
A040384	60X120	9,00	PC BIA GL



DIMENSIONS AND SURFACE PROPERTIES

Size, thickness, side straightness, flatness, orthogonality	UNE-EN 14411	It accomplished all requirements
---	--------------	----------------------------------

PHYSICAL PROPERTIES

Water absorption capacity	EN ISO 10545-03	< 0,5%
Flexion resistance	EN ISO 10545-04	=> 35 N/mm ²
Abrasion resistance (glazed Ceramic)	EN ISO10545-07	IV
Thermal shock resistance	EN ISO 10545-09	It stands the test
Cracking resistance	EN ISO 10545-11	It stands the test
Frost resistance	EN ISO 10545-12	It stands the test

CHEMICAL PROPERTIES

Resistance to acids	EN ISO 10545-13	GHB
Resistance to alcalis	EN ISO 10545-13	GHB
Resistance to cleaning products	EN ISO 10545-13	GHB
Resistance to chemical products in swimming pool water	EN ISO 10545-13	GHB
Stains resistance	EN ISO 10545-14	5

ANTI-SLIP CHARACTERISTICS

Slip resistance (Rd)	UNE-EN 16165-C	Class 3
Slip resistance (R)	EN 16165-B	R11
Slip resistance (barefeet)	EN 16165-A	B



KINSTONE MIST RECT 90X90

REFERENCE	SIZE (cm)	THICKNESS (mm)	GROUP
A040694	90X90	9,20	PC BIA GL

DIMENSIONS AND SURFACE PROPERTIES

Size, thickness, side straightness, flatness, orthogonality	UNE-EN 14411	It accomplished all requirements
---	--------------	----------------------------------

PHYSICAL PROPERTIES

Water absorption capacity	EN ISO 10545-03	< 0,5%
Flexion resistance	EN ISO 10545-04	=> 35 N/mm ²
Abrasion resistance (glazed Ceramic)	EN ISO10545-07	IV
Thermal shock resistance	EN ISO 10545-09	It stands the test
Cracking resistance	EN ISO 10545-11	It stands the test
Frost resistance	EN ISO 10545-12	It stands the test

CHEMICAL PROPERTIES

Resistance to acids	EN ISO 10545-13	GHB
Resistance to alcalis	EN ISO 10545-13	GHB
Resistance to cleaning products	EN ISO 10545-13	GHB
Resistance to chemical products in swimming pool water	EN ISO 10545-13	GHB
Stains resistance	EN ISO 10545-14	5

ANTI-SLIP KINSTONE MIST RECT 90X90



REFERENCE	SIZE (cm)	THICKNESS (mm)	GROUP
A040698	90X90	9,40	PC BIA GL

DIMENSIONS AND SURFACE PROPERTIES

Size, thickness, side straightness, flatness, orthogonality	UNE-EN 14411	It accomplished all requirements
---	--------------	----------------------------------

PHYSICAL PROPERTIES

Water absorption capacity	EN ISO 10545-03	< 0,5%
Flexion resistance	EN ISO 10545-04	=> 35 N/mm ²
Abrasion resistance (glazed Ceramic)	EN ISO10545-07	IV
Thermal shock resistance	EN ISO 10545-09	It stands the test
Cracking resistance	EN ISO 10545-11	It stands the test
Frost resistance	EN ISO 10545-12	It stands the test

CHEMICAL PROPERTIES

Resistance to acids	EN ISO 10545-13	GHB
Resistance to alcalis	EN ISO 10545-13	GHB
Resistance to cleaning products	EN ISO 10545-13	GHB
Resistance to chemical products in swimming pool water	EN ISO 10545-13	GHB
Stains resistance	EN ISO 10545-14	5

ANTI-SLIP CHARACTERISTICS

Slip resistance (Rd)	UNE-EN 16165-C	Class 3
Slip resistance (R)	EN 16165-B	R11
Slip resistance (barefeet)	EN 16165-A	B



KINSTONE MIST RECT 60X60

REFERENCE	SIZE (cm)	THICKNESS (mm)	GROUP
A040421	60X60	9,60	PC BIA GL

DIMENSIONS AND SURFACE PROPERTIES

PHYSICAL PROPERTIES

Frost resistance

EN ISO 10545-12

It stands the test

CHEMICAL PROPERTIES

MOSAICO KINSTONE MIST 30X30 (5X5)

REFERENCE	SIZE (cm)	THICKNESS (mm)	GROUP
A040413	30X30	9,40	PC BIA GL



DIMENSIONS AND SURFACE PROPERTIES

PHYSICAL PROPERTIES

Frost resistance

EN ISO 10545-12

It stands the test

CHEMICAL PROPERTIES



M-STICK KINSTONE MIST 30X30

REFERENCE	SIZE (cm)	THICKNESS (mm)	GROUP
A040407	30X30	9,10	PC BIA GL

DIMENSIONS AND SURFACE PROPERTIES

PHYSICAL PROPERTIES

Frost resistance

EN ISO 10545-12

It stands the test

CHEMICAL PROPERTIES

ROD. KINSTONE MIST 8X60

REFERENCE	SIZE (cm)	THICKNESS (mm)	GROUP
A040908	8X60	8,20	PC BIA GL



DIMENSIONS AND SURFACE PROPERTIES

Size, thickness, side straightness, flatness, orthogonality	UNE-EN 14411	It accomplished all requirements
---	--------------	----------------------------------

PHYSICAL PROPERTIES

Water absorption capacity	EN ISO 10545-03	< 0,5%
Flexion resistance	EN ISO 10545-04	=> 35 N/mm ²
Thermal shock resistance	EN ISO 10545-09	It stands the test
Cracking resistance	EN ISO 10545-11	It stands the test
Frost resistance	EN ISO 10545-12	It stands the test

CHEMICAL PROPERTIES

Stains resistance	EN ISO 10545-14	5
-------------------	-----------------	---

PELDAÑO RECTO ANT C3 KINSTONE MIST 33X120



REFERENCE	SIZE (cm)	THICKNESS (mm)	GROUP
A040760	33X120	32,50	EXTRUSI

DIMENSIONS AND SURFACE PROPERTIES

Size, thickness, side straightness, flatness, orthogonality	UNE-EN 14411	It accomplished all requirements
---	--------------	----------------------------------

PHYSICAL PROPERTIES

Water absorption capacity	EN ISO 10545-03	0,5 %= Eb=3%
Flexion resistance	EN ISO 10545-04	=> 30 N/mm ²
Abrasion resistance (glazed Ceramic)	EN ISO10545-07	IV
Thermal shock resistance	EN ISO 10545-09	It stands the test
Cracking resistance	EN ISO 10545-11	It stands the test
Frost resistance	EN ISO 10545-12	It stands the test

CHEMICAL PROPERTIES

Resistance to acids	EN ISO 10545-13	GLA
Resistance to alcalis	EN ISO 10545-13	GLA
Resistance to cleaning products	EN ISO 10545-13	GA
Resistance to chemical products in swimming pool water	EN ISO 10545-13	GA
Stains resistance	EN ISO 10545-14	5

ANTI-SLIP CHARACTERISTICS

Slip resistance (Rd)	UNE-EN 16165-C	Class 3
Slip resistance (R)	EN 16165-B	R11
Slip resistance (barefeet)	EN 16165-A	C

PELDAÑO RECTO C1 KINSTONE

MIST 33X120

REFERENCE	SIZE (cm)	THICKNESS (mm)	GROUP
A040756	33X120	32,60	EXTRUSI



DIMENSIONS AND SURFACE PROPERTIES

Size, thickness, side straightness, flatness, orthogonality	UNE-EN 14411	It accomplished all requirements
---	--------------	----------------------------------

PHYSICAL PROPERTIES

Water absorption capacity	EN ISO 10545-03	0,5 %= Eb=3%
Flexion resistance	EN ISO 10545-04	=> 30 N/mm ²
Abrasion resistance (glazed Ceramic)	EN ISO10545-07	III
Thermal shock resistance	EN ISO 10545-09	It stands the test
Cracking resistance	EN ISO 10545-11	It stands the test
Frost resistance	EN ISO 10545-12	It stands the test

CHEMICAL PROPERTIES

Resistance to acids	EN ISO 10545-13	GLA
Resistance to alcalis	EN ISO 10545-13	GLA
Resistance to cleaning products	EN ISO 10545-13	GA
Resistance to chemical products in swimming pool water	EN ISO 10545-13	GA
Stains resistance	EN ISO 10545-14	5

ANTI-SLIP CHARACTERISTICS

Slip resistance (Rd)	UNE-EN 16165-C	0.00
----------------------	----------------	------

KINSTONE CHALK RECT 120X280

REFERENCE	SIZE (cm)	THICKNESS (mm)	GROUP
A041202	120X280	6,50	PC BIA GL

DIMENSIONS AND SURFACE PROPERTIES

Size, thickness, side straightness, flatness, orthogonality	UNE-EN 14411	It accomplished all requirements
---	--------------	----------------------------------

PHYSICAL PROPERTIES

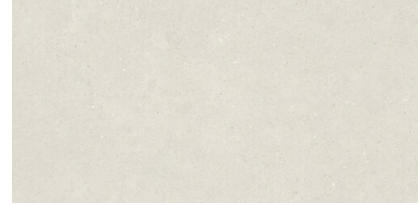
Water absorption capacity	EN ISO 10545-03	< 0,5%
Flexion resistance	EN ISO 10545-04	=> 50 N/mm ²
Abrasion resistance (glazed Ceramic)	EN ISO10545-07	IV
Cracking resistance	EN ISO 10545-11	It stands the test
Frost resistance	EN ISO 10545-12	It stands the test

CHEMICAL PROPERTIES

Resistance to acids	EN ISO 10545-13	GLA
Resistance to alcalis	EN ISO 10545-13	GLA
Resistance to cleaning products	EN ISO 10545-13	GA
Resistance to chemical products in swimming pool water	EN ISO 10545-13	GA
Stains resistance	EN ISO 10545-14	5

KINSTONE CHALK RECT 60X120

REFERENCE	SIZE (cm)	THICKNESS (mm)	GROUP
A040376	60X120	9,10	PC BIA GL



DIMENSIONS AND SURFACE PROPERTIES

Size, thickness, side straightness, flatness, orthogonality	UNE-EN 14411	It accomplished all requirements
---	--------------	----------------------------------

PHYSICAL PROPERTIES

Water absorption capacity	EN ISO 10545-03	< 0,5%
Flexion resistance	EN ISO 10545-04	=> 35 N/mm ²
Abrasion resistance (glazed Ceramic)	EN ISO10545-07	IV
Thermal shock resistance	EN ISO 10545-09	It stands the test
Cracking resistance	EN ISO 10545-11	It stands the test
Frost resistance	EN ISO 10545-12	It stands the test

CHEMICAL PROPERTIES

Resistance to acids	EN ISO 10545-13	GHB
Resistance to alcalis	EN ISO 10545-13	GHB
Resistance to cleaning products	EN ISO 10545-13	GHB
Resistance to chemical products in swimming pool water	EN ISO 10545-13	GHB
Stains resistance	EN ISO 10545-14	5

ANTI-SLIP CHARACTERISTICS

Slip resistance (Rd)	UNE-EN 16165-C	0.00
----------------------	----------------	------

ANTI-SLIP KINSTONE CHALK RECT 60X120

REFERENCE	SIZE (cm)	THICKNESS (mm)	GROUP
A040381	60X120	8,90	PC BIA GL



DIMENSIONS AND SURFACE PROPERTIES

Size, thickness, side straightness, flatness, orthogonality	UNE-EN 14411	It accomplished all requirements
---	--------------	----------------------------------

PHYSICAL PROPERTIES

Water absorption capacity	EN ISO 10545-03	< 0,5%
Flexion resistance	EN ISO 10545-04	=> 35 N/mm ²
Abrasion resistance (glazed Ceramic)	EN ISO10545-07	IV
Thermal shock resistance	EN ISO 10545-09	It stands the test
Cracking resistance	EN ISO 10545-11	It stands the test
Frost resistance	EN ISO 10545-12	It stands the test

CHEMICAL PROPERTIES

Resistance to acids	EN ISO 10545-13	GHB
Resistance to alcalis	EN ISO 10545-13	GHB
Resistance to cleaning products	EN ISO 10545-13	GHB
Resistance to chemical products in swimming pool water	EN ISO 10545-13	GHB

ANTI-SLIP CHARACTERISTICS

Slip resistance (Rd)	UNE-EN 16165-C	Class 3
Slip resistance (R)	EN 16165-B	R11
Slip resistance (barefeet)	EN 16165-A	B



KINSTONE CHALK RECT 90X90

REFERENCE	SIZE (cm)	THICKNESS (mm)	GROUP
A040692	90X90	9,20	PC BIA GL

DIMENSIONS AND SURFACE PROPERTIES

Size, thickness, side straightness, flatness, orthogonality	UNE-EN 14411	It accomplished all requirements
---	--------------	----------------------------------

PHYSICAL PROPERTIES

Water absorption capacity	EN ISO 10545-03	< 0,5%
Flexion resistance	EN ISO 10545-04	=> 35 N/mm ²
Abrasion resistance (glazed Ceramic)	EN ISO10545-07	IV
Thermal shock resistance	EN ISO 10545-09	It stands the test
Cracking resistance	EN ISO 10545-11	It stands the test
Frost resistance	EN ISO 10545-12	It stands the test

CHEMICAL PROPERTIES

Resistance to acids	EN ISO 10545-13	GHB
Resistance to alcalis	EN ISO 10545-13	GHB
Resistance to cleaning products	EN ISO 10545-13	GHB
Resistance to chemical products in swimming pool water	EN ISO 10545-13	GHB
Stains resistance	EN ISO 10545-14	5

ANTI-SLIP KINSTONE CHALK RECT 90X90



REFERENCE	SIZE (cm)	THICKNESS (mm)	GROUP
A040696	90X90	9,50	PC BIA GL

DIMENSIONS AND SURFACE PROPERTIES

Size, thickness, side straightness, flatness, orthogonality	UNE-EN 14411	It accomplished all requirements
---	--------------	----------------------------------

PHYSICAL PROPERTIES

Water absorption capacity	EN ISO 10545-03	< 0,5%
Flexion resistance	EN ISO 10545-04	=> 35 N/mm ²
Abrasion resistance (glazed Ceramic)	EN ISO10545-07	IV
Thermal shock resistance	EN ISO 10545-09	It stands the test
Cracking resistance	EN ISO 10545-11	It stands the test
Frost resistance	EN ISO 10545-12	It stands the test

CHEMICAL PROPERTIES

Resistance to acids	EN ISO 10545-13	GHB
Resistance to alcalis	EN ISO 10545-13	GHB
Resistance to cleaning products	EN ISO 10545-13	GHB
Resistance to chemical products in swimming pool water	EN ISO 10545-13	GHB
Stains resistance	EN ISO 10545-14	5

ANTI-SLIP CHARACTERISTICS

Slip resistance (Rd)	UNE-EN 16165-C	Class 3
Slip resistance (R)	EN 16165-B	R11
Slip resistance (barefeet)	EN 16165-A	B



KINSTONE CHALK RECT 60X60

REFERENCE	SIZE (cm)	THICKNESS (mm)	GROUP
A040415	60X60	9,30	PC BIA GL

DIMENSIONS AND SURFACE PROPERTIES

PHYSICAL PROPERTIES

Frost resistance

EN ISO 10545-12

It stands the test

CHEMICAL PROPERTIES

MOSAICO KINSTONE CHALK 30X30 (5X5)



REFERENCE	SIZE (cm)	THICKNESS (mm)	GROUP
A040410	30X30	9,30	PC BIA GL

DIMENSIONS AND SURFACE PROPERTIES

PHYSICAL PROPERTIES

Frost resistance

EN ISO 10545-12

It stands the test

CHEMICAL PROPERTIES



M-STICK KINSTONE CHALK 30X30

REFERENCE	SIZE (cm)	THICKNESS (mm)	GROUP
A040403	30X30	9,30	PC BIA GL

DIMENSIONS AND SURFACE PROPERTIES

PHYSICAL PROPERTIES

Frost resistance

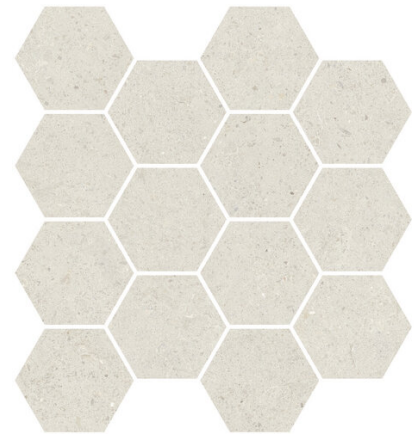
EN ISO 10545-12

It stands the test

CHEMICAL PROPERTIES

APE

best for you



MALLA KINSTONE CHALK 29X27

REFERENCE	SIZE (cm)	THICKNESS (mm)	GROUP
A040416	29X27	0,00	PC BIA GL

DIMENSIONS AND SURFACE PROPERTIES

PHYSICAL PROPERTIES

Frost resistance

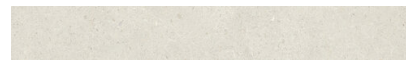
EN ISO 10545-12

It stands the test

CHEMICAL PROPERTIES

ROD. KINSTONE CHALK 8X60

REFERENCE	SIZE (cm)	THICKNESS (mm)	GROUP
A040905	8X60	8,20	PC BIA GL



DIMENSIONS AND SURFACE PROPERTIES

Size, thickness, side straightness, flatness, orthogonality	UNE-EN 14411	It accomplished all requirements
---	--------------	----------------------------------

PHYSICAL PROPERTIES

Water absorption capacity	EN ISO 10545-03	< 0,5%
Flexion resistance	EN ISO 10545-04	=> 35 N/mm ²
Thermal shock resistance	EN ISO 10545-09	It stands the test
Cracking resistance	EN ISO 10545-11	It stands the test
Frost resistance	EN ISO 10545-12	It stands the test

CHEMICAL PROPERTIES

Stains resistance	EN ISO 10545-14	5
-------------------	-----------------	---

PELDAÑO RECTO ANT C3 KINSTONE CHALK 33X120



REFERENCE	SIZE (cm)	THICKNESS (mm)	GROUP
A040757	33X120	32,00	EXTRUSI

DIMENSIONS AND SURFACE PROPERTIES

Size, thickness, side straightness, flatness, orthogonality	UNE-EN 14411	It accomplished all requirements
---	--------------	----------------------------------

PHYSICAL PROPERTIES

Water absorption capacity	EN ISO 10545-03	0,5 %= Eb=3%
Flexion resistance	EN ISO 10545-04	=> 30 N/mm ²
Abrasion resistance (glazed Ceramic)	EN ISO10545-07	IV
Thermal shock resistance	EN ISO 10545-09	It stands the test
Cracking resistance	EN ISO 10545-11	It stands the test
Frost resistance	EN ISO 10545-12	It stands the test

CHEMICAL PROPERTIES

Resistance to acids	EN ISO 10545-13	GLA
Resistance to alcalis	EN ISO 10545-13	GLA
Resistance to cleaning products	EN ISO 10545-13	GA
Resistance to chemical products in swimming pool water	EN ISO 10545-13	GA
Stains resistance	EN ISO 10545-14	5

ANTI-SLIP CHARACTERISTICS

Slip resistance (Rd)	UNE-EN 16165-C	Class 3
Slip resistance (R)	EN 16165-B	R11
Slip resistance (barefeet)	EN 16165-A	C

PELDAÑO RECTO C1 KINSTONE

CHALK 33X120

REFERENCE	SIZE (cm)	THICKNESS (mm)	GROUP
A040753	33X120	32,60	EXTRUSI



DIMENSIONS AND SURFACE PROPERTIES

Size, thickness, side straightness, flatness, orthogonality	UNE-EN 14411	It accomplished all requirements
---	--------------	----------------------------------

PHYSICAL PROPERTIES

Water absorption capacity	EN ISO 10545-03	0,5 %= Eb=3%
Flexion resistance	EN ISO 10545-04	=> 30 N/mm ²
Abrasion resistance (glazed Ceramic)	EN ISO10545-07	III
Thermal shock resistance	EN ISO 10545-09	It stands the test
Cracking resistance	EN ISO 10545-11	It stands the test
Frost resistance	EN ISO 10545-12	It stands the test

CHEMICAL PROPERTIES

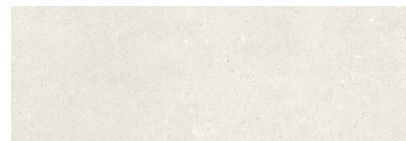
Resistance to acids	EN ISO 10545-13	GLA
Resistance to alcalis	EN ISO 10545-13	GLA
Resistance to cleaning products	EN ISO 10545-13	GA
Resistance to chemical products in swimming pool water	EN ISO 10545-13	GA
Stains resistance	EN ISO 10545-14	5

ANTI-SLIP CHARACTERISTICS

Slip resistance (Rd)	UNE-EN 16165-C	0.00
----------------------	----------------	------

KINSTONE CHALK RECT 30X90

REFERENCE	SIZE (cm)	THICKNESS (mm)	GROUP
A040380	30X90	10,50	REVESTI



DIMENSIONS AND SURFACE PROPERTIES

Size, thickness, side straightness, flatness, orthogonality	UNE-EN 14411	It accomplished all requirements
---	--------------	----------------------------------

PHYSICAL PROPERTIES

Water absorption capacity	EN ISO 10545-03	>10%
Flexion resistance	EN ISO 10545-04	=> 18 N/mm ²
Thermal shock resistance	EN ISO 10545-09	It stands the test
Cracking resistance	EN ISO 10545-11	It stands the test
Frost resistance	EN ISO 10545-12	Not pass the test

CHEMICAL PROPERTIES

Resistance to acids	EN ISO 10545-13	GLA
Resistance to alcalis	EN ISO 10545-13	GHA
Resistance to cleaning products	EN ISO 10545-13	GA
Resistance to chemical products in swimming pool water	EN ISO 10545-13	GA
Stains resistance	EN ISO 10545-14	5

SKETCH MIX CHALK RECT 30X90

REFERENCE	SIZE (cm)	THICKNESS (mm)	GROUP
A040389	30X90	10,50	REVESTI



DIMENSIONS AND SURFACE PROPERTIES

Size, thickness, side straightness, flatness, orthogonality UNE-EN 14411 It accomplished all requirements

PHYSICAL PROPERTIES

Water absorption capacity	EN ISO 10545-03	>10%
Flexion resistance	EN ISO 10545-04	=> 18 N/mm ²
Thermal shock resistance	EN ISO 10545-09	It stands the test
Cracking resistance	EN ISO 10545-11	It stands the test
Frost resistance	EN ISO 10545-12	0.00

CHEMICAL PROPERTIES

Resistance to acids	EN ISO 10545-13	GLA
Resistance to alcalis	EN ISO 10545-13	GHA
Resistance to cleaning products	EN ISO 10545-13	GA
Resistance to chemical products in swimming pool water	EN ISO 10545-13	GA
Stains resistance	EN ISO 10545-14	5

KINSTONE DAKAR RECT 120X280

REFERENCE	SIZE (cm)	THICKNESS (mm)	GROUP
A041205	120X280	6,50	PC BIA GL

DIMENSIONS AND SURFACE PROPERTIES

Size, thickness, side straightness, flatness, orthogonality UNE-EN 14411 It accomplished all requirements

PHYSICAL PROPERTIES

Water absorption capacity	EN ISO 10545-03	< 0,5%
Flexion resistance	EN ISO 10545-04	=> 50 N/mm ²
Abrasion resistance (glazed Ceramic)	EN ISO 10545-07	IV
Cracking resistance	EN ISO 10545-11	It stands the test
Frost resistance	EN ISO 10545-12	It stands the test

CHEMICAL PROPERTIES

Resistance to acids	EN ISO 10545-13	GLA
Resistance to alcalis	EN ISO 10545-13	GLA
Resistance to cleaning products	EN ISO 10545-13	GA
Resistance to chemical products in swimming pool water	EN ISO 10545-13	GA
Stains resistance	EN ISO 10545-14	5

KINSTONE DAKAR RECT 60X120

REFERENCE	SIZE (cm)	THICKNESS (mm)	GROUP
A040377	60X120	9,00	PC BIA GL



DIMENSIONS AND SURFACE PROPERTIES

Size, thickness, side straightness, flatness, orthogonality	UNE-EN 14411	It accomplished all requirements
---	--------------	----------------------------------

PHYSICAL PROPERTIES

Water absorption capacity	EN ISO 10545-03	< 0,5%
Flexion resistance	EN ISO 10545-04	=> 35 N/mm ²
Abrasion resistance (glazed Ceramic)	EN ISO10545-07	IV
Thermal shock resistance	EN ISO 10545-09	It stands the test
Cracking resistance	EN ISO 10545-11	It stands the test
Frost resistance	EN ISO 10545-12	It stands the test

CHEMICAL PROPERTIES

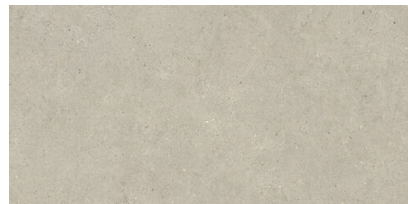
Resistance to acids	EN ISO 10545-13	GHB
Resistance to alcalis	EN ISO 10545-13	GHB
Resistance to cleaning products	EN ISO 10545-13	GHB
Resistance to chemical products in swimming pool water	EN ISO 10545-13	GHB
Stains resistance	EN ISO 10545-14	5

ANTI-SLIP CHARACTERISTICS

Slip resistance (Rd)	UNE-EN 16165-C	0.00
----------------------	----------------	------

ANTI-SLIP KINSTONE DAKAR RECT 60X120

REFERENCE	SIZE (cm)	THICKNESS (mm)	GROUP
A040382	60X120	9,10	PC BIA GL



DIMENSIONS AND SURFACE PROPERTIES

Size, thickness, side straightness, flatness, orthogonality	UNE-EN 14411	It accomplished all requirements
---	--------------	----------------------------------

PHYSICAL PROPERTIES

Water absorption capacity	EN ISO 10545-03	< 0,5%
Flexion resistance	EN ISO 10545-04	=> 35 N/mm ²
Abrasion resistance (glazed Ceramic)	EN ISO10545-07	IV
Thermal shock resistance	EN ISO 10545-09	It stands the test
Cracking resistance	EN ISO 10545-11	It stands the test
Frost resistance	EN ISO 10545-12	It stands the test

CHEMICAL PROPERTIES

Resistance to acids	EN ISO 10545-13	GHB
Resistance to alcalis	EN ISO 10545-13	GHB
Resistance to cleaning products	EN ISO 10545-13	GHB
Resistance to chemical products in swimming pool water	EN ISO 10545-13	GHB
Stains resistance	EN ISO 10545-14	5

ANTI-SLIP CHARACTERISTICS

Slip resistance (Rd)	UNE-EN 16165-C	Class 3
Slip resistance (R)	EN 16165-B	R11
Slip resistance (barefeet)	EN 16165-A	B



KINSTONE DAKAR RECT 90X90

REFERENCE	SIZE (cm)	THICKNESS (mm)	GROUP
A040693	90X90	9,30	PC BIA GL

DIMENSIONS AND SURFACE PROPERTIES

Size, thickness, side straightness, flatness, orthogonality UNE-EN 14411 It accomplished all requirements

PHYSICAL PROPERTIES

Water absorption capacity	EN ISO 10545-03	< 0,5%
Flexion resistance	EN ISO 10545-04	=> 35 N/mm ²
Abrasion resistance (glazed Ceramic)	EN ISO10545-07	IV
Thermal shock resistance	EN ISO 10545-09	It stands the test
Cracking resistance	EN ISO 10545-11	It stands the test
Frost resistance	EN ISO 10545-12	It stands the test

CHEMICAL PROPERTIES

Resistance to acids	EN ISO 10545-13	GHB
Resistance to alcalis	EN ISO 10545-13	GHB
Resistance to cleaning products	EN ISO 10545-13	GHB
Resistance to chemical products in swimming pool water	EN ISO 10545-13	GHB
Stains resistance	EN ISO 10545-14	5

ANTI-SLIP KINSTONE DAKAR RECT 90X90



REFERENCE	SIZE (cm)	THICKNESS (mm)	GROUP
A040697	90X90	9,40	PC BIA GL

DIMENSIONS AND SURFACE PROPERTIES

Size, thickness, side straightness, flatness, orthogonality	UNE-EN 14411	It accomplished all requirements
---	--------------	----------------------------------

PHYSICAL PROPERTIES

Water absorption capacity	EN ISO 10545-03	< 0,5%
Flexion resistance	EN ISO 10545-04	=> 35 N/mm ²
Abrasion resistance (glazed Ceramic)	EN ISO10545-07	IV
Thermal shock resistance	EN ISO 10545-09	It stands the test
Cracking resistance	EN ISO 10545-11	It stands the test
Frost resistance	EN ISO 10545-12	It stands the test

CHEMICAL PROPERTIES

Resistance to acids	EN ISO 10545-13	GHB
Resistance to alcalis	EN ISO 10545-13	GHB
Resistance to cleaning products	EN ISO 10545-13	GHB
Resistance to chemical products in swimming pool water	EN ISO 10545-13	GHB
Stains resistance	EN ISO 10545-14	5

ANTI-SLIP CHARACTERISTICS

Slip resistance (Rd)	UNE-EN 16165-C	Class 3
Slip resistance (R)	EN 16165-B	R11
Slip resistance (barefeet)	EN 16165-A	B



KINSTONE DAKAR RECT 60X60

REFERENCE	SIZE (cm)	THICKNESS (mm)	GROUP
A040417	60X60	9,20	PC BIA GL

DIMENSIONS AND SURFACE PROPERTIES

PHYSICAL PROPERTIES

Frost resistance

EN ISO 10545-12

It stands the test

CHEMICAL PROPERTIES

MOSAICO KINSTONE DAKAR 30X30 (5X5)

REFERENCE	SIZE (cm)	THICKNESS (mm)	GROUP
A040411	30X30	9,40	PC BIA GL



DIMENSIONS AND SURFACE PROPERTIES

PHYSICAL PROPERTIES

Frost resistance

EN ISO 10545-12

It stands the test

CHEMICAL PROPERTIES



M-STICK KINSTONE DAKAR 30X30

REFERENCE	SIZE (cm)	THICKNESS (mm)	GROUP
A040404	30X30	9,30	PC BIA GL

DIMENSIONS AND SURFACE PROPERTIES

PHYSICAL PROPERTIES

Frost resistance

EN ISO 10545-12

It stands the test

CHEMICAL PROPERTIES

ROD. KINSTONE DAKAR 8X60

REFERENCE	SIZE (cm)	THICKNESS (mm)	GROUP
A040906	8X60	8,20	PC BIA GL



DIMENSIONS AND SURFACE PROPERTIES

Size, thickness, side straightness, flatness, orthogonality	UNE-EN 14411	It accomplished all requirements
---	--------------	----------------------------------

PHYSICAL PROPERTIES

Water absorption capacity	EN ISO 10545-03	< 0,5%
Flexion resistance	EN ISO 10545-04	=> 35 N/mm ²
Thermal shock resistance	EN ISO 10545-09	It stands the test
Cracking resistance	EN ISO 10545-11	It stands the test
Frost resistance	EN ISO 10545-12	It stands the test

CHEMICAL PROPERTIES

Stains resistance	EN ISO 10545-14	5
-------------------	-----------------	---

PELDAÑO RECTO ANT C3 KINSTONE DAKAR 33X120



REFERENCE	SIZE (cm)	THICKNESS (mm)	GROUP
A040758	33X120	32,50	EXTRUSI

DIMENSIONS AND SURFACE PROPERTIES

Size, thickness, side straightness, flatness, orthogonality	UNE-EN 14411	It accomplished all requirements
---	--------------	----------------------------------

PHYSICAL PROPERTIES

Water absorption capacity	EN ISO 10545-03	0,5 %= Eb=3%
Flexion resistance	EN ISO 10545-04	=> 30 N/mm ²
Abrasion resistance (glazed Ceramic)	EN ISO10545-07	IV
Thermal shock resistance	EN ISO 10545-09	It stands the test
Cracking resistance	EN ISO 10545-11	It stands the test
Frost resistance	EN ISO 10545-12	It stands the test

CHEMICAL PROPERTIES

Resistance to acids	EN ISO 10545-13	GLA
Resistance to alcalis	EN ISO 10545-13	GLA
Resistance to cleaning products	EN ISO 10545-13	GA
Resistance to chemical products in swimming pool water	EN ISO 10545-13	GA
Stains resistance	EN ISO 10545-14	0.00

ANTI-SLIP CHARACTERISTICS

Slip resistance (Rd)	UNE-EN 16165-C	Class 3
Slip resistance (R)	EN 16165-B	R11
Slip resistance (barefeet)	EN 16165-A	C

PELDAÑO RECTO C1 KINSTONE

DAKAR 33X120

REFERENCE	SIZE (cm)	THICKNESS (mm)	GROUP
A040754	33X120	33,00	EXTRUSI



DIMENSIONS AND SURFACE PROPERTIES

Size, thickness, side straightness, flatness, orthogonality	UNE-EN 14411	It accomplished all requirements
---	--------------	----------------------------------

PHYSICAL PROPERTIES

Water absorption capacity	EN ISO 10545-03	0,5 %= Eb=3%
Flexion resistance	EN ISO 10545-04	=> 30 N/mm ²
Abrasion resistance (glazed Ceramic)	EN ISO10545-07	III
Thermal shock resistance	EN ISO 10545-09	It stands the test
Cracking resistance	EN ISO 10545-11	It stands the test
Frost resistance	EN ISO 10545-12	It stands the test

CHEMICAL PROPERTIES

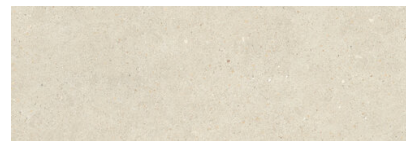
Resistance to acids	EN ISO 10545-13	GLA
Resistance to alcalis	EN ISO 10545-13	GLA
Resistance to cleaning products	EN ISO 10545-13	GA
Resistance to chemical products in swimming pool water	EN ISO 10545-13	GA
Stains resistance	EN ISO 10545-14	5

ANTI-SLIP CHARACTERISTICS

Slip resistance (Rd)	UNE-EN 16165-C	0.00
----------------------	----------------	------

KINSTONE DAKAR RECT 30X90

REFERENCE	SIZE (cm)	THICKNESS (mm)	GROUP
A040385	30X90	10,30	REVESTI



DIMENSIONS AND SURFACE PROPERTIES

Size, thickness, side straightness, flatness, orthogonality UNE-EN 14411 It accomplished all requirements

PHYSICAL PROPERTIES

Water absorption capacity	EN ISO 10545-03	>10%
Flexion resistance	EN ISO 10545-04	=> 18 N/mm ²
Thermal shock resistance	EN ISO 10545-09	It stands the test
Cracking resistance	EN ISO 10545-11	It stands the test
Frost resistance	EN ISO 10545-12	0.00

CHEMICAL PROPERTIES

Resistance to acids	EN ISO 10545-13	GLA
Resistance to alcalis	EN ISO 10545-13	GHA
Resistance to cleaning products	EN ISO 10545-13	GA
Resistance to chemical products in swimming pool water	EN ISO 10545-13	GA
Stains resistance	EN ISO 10545-14	5

SKETCH MIX DAKAR RECT 30X90

REFERENCE	SIZE (cm)	THICKNESS (mm)	GROUP
A040392	30X90	10,30	REVESTI



DIMENSIONS AND SURFACE PROPERTIES

Size, thickness, side straightness, flatness, orthogonality UNE-EN 14411 It accomplished all requirements

PHYSICAL PROPERTIES

Water absorption capacity	EN ISO 10545-03	>10%
Flexion resistance	EN ISO 10545-04	=> 18 N/mm ²
Thermal shock resistance	EN ISO 10545-09	It stands the test
Cracking resistance	EN ISO 10545-11	It stands the test
Frost resistance	EN ISO 10545-12	0.00

CHEMICAL PROPERTIES

Resistance to acids	EN ISO 10545-13	GLA
Resistance to alcalis	EN ISO 10545-13	GHA
Resistance to cleaning products	EN ISO 10545-13	GA
Resistance to chemical products in swimming pool water	EN ISO 10545-13	GA
Stains resistance	EN ISO 10545-14	5

SHOJI DAKAR RECT 30X90

REFERENCE	SIZE (cm)	THICKNESS (mm)	GROUP
A040397	30X90	10,60	REVESTI



DIMENSIONS AND SURFACE PROPERTIES

Size, thickness, side straightness, flatness, orthogonality UNE-EN 14411 It accomplished all requirements

PHYSICAL PROPERTIES

Water absorption capacity	EN ISO 10545-03	>10%
Flexion resistance	EN ISO 10545-04	=> 18 N/mm ²
Thermal shock resistance	EN ISO 10545-09	It stands the test
Cracking resistance	EN ISO 10545-11	It stands the test
Frost resistance	EN ISO 10545-12	0.00

CHEMICAL PROPERTIES

Resistance to acids	EN ISO 10545-13	GLA
Resistance to alcalis	EN ISO 10545-13	GHA
Resistance to cleaning products	EN ISO 10545-13	GA
Resistance to chemical products in swimming pool water	EN ISO 10545-13	GA
Stains resistance	EN ISO 10545-14	5

APE

best for you

MOSAICO KINSTONE COLD 30X30 (5X5)



REFERENCE	SIZE (cm)	THICKNESS (mm)	GROUP
A040414	30X30	9,40	PC BIA GL

DIMENSIONS AND SURFACE PROPERTIES

PHYSICAL PROPERTIES

Frost resistance

EN ISO 10545-12

It stands the test

CHEMICAL PROPERTIES



M-STICK KINSTONE COLD 30X30

REFERENCE	SIZE (cm)	THICKNESS (mm)	GROUP
A040406	30X30	0,00	PC BIA GL

DIMENSIONS AND SURFACE PROPERTIES

PHYSICAL PROPERTIES

Frost resistance

EN ISO 10545-12

It stands the test

CHEMICAL PROPERTIES



KINFOLK BLACK MIX RECT 60X120

REFERENCE	SIZE (cm)	THICKNESS (mm)	GROUP
A040544	60X120	9,00	PC BIA GL

DIMENSIONS AND SURFACE PROPERTIES

Size, thickness, side straightness, flatness, orthogonality UNE-EN 14411 It accomplished all requirements

PHYSICAL PROPERTIES

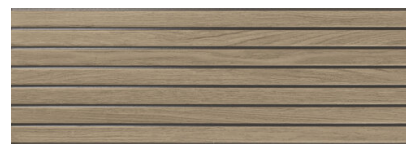
Water absorption capacity	EN ISO 10545-03	< 0,5%
Flexion resistance	EN ISO 10545-04	=> 35 N/mm ²
Abrasion resistance (glazed Ceramic)	EN ISO10545-07	II
Thermal shock resistance	EN ISO 10545-09	It stands the test
Cracking resistance	EN ISO 10545-11	It stands the test
Frost resistance	EN ISO 10545-12	It stands the test

CHEMICAL PROPERTIES

Resistance to acids	EN ISO 10545-13	GHB
Resistance to alcalis	EN ISO 10545-13	GHB
Resistance to cleaning products	EN ISO 10545-13	GHB
Resistance to chemical products in swimming pool water	EN ISO 10545-13	GHB
Stains resistance	EN ISO 10545-14	5

SHOJI BLACK RECT 30X90

REFERENCE	SIZE (cm)	THICKNESS (mm)	GROUP
A040943	30X90	10,00	REVESTI



DIMENSIONS AND SURFACE PROPERTIES

Size, thickness, side straightness, flatness, orthogonality UNE-EN 14411 It accomplished all requirements

PHYSICAL PROPERTIES

Water absorption capacity	EN ISO 10545-03	>10%
Flexion resistance	EN ISO 10545-04	=> 18 N/mm ²
Thermal shock resistance	EN ISO 10545-09	It stands the test
Cracking resistance	EN ISO 10545-11	It stands the test
Frost resistance	EN ISO 10545-12	Not pass the test

CHEMICAL PROPERTIES

Resistance to acids	EN ISO 10545-13	GLA
Resistance to alcalis	EN ISO 10545-13	GHA
Resistance to cleaning products	EN ISO 10545-13	GA
Resistance to chemical products in swimming pool water	EN ISO 10545-13	GA
Stains resistance	EN ISO 10545-14	5

TARIMA BLACK RECT 30X90

REFERENCE	SIZE (cm)	THICKNESS (mm)	GROUP
A040671	30X90	10,90	REVESTI



DIMENSIONS AND SURFACE PROPERTIES

Size, thickness, side straightness, flatness, orthogonality UNE-EN 14411 It accomplished all requirements

PHYSICAL PROPERTIES

Water absorption capacity	EN ISO 10545-03	>10%
Flexion resistance	EN ISO 10545-04	=>12 N/mm ²
Thermal shock resistance	EN ISO 10545-09	It stands the test
Cracking resistance	EN ISO 10545-11	It stands the test

CHEMICAL PROPERTIES

Resistance to acids	EN ISO 10545-13	GHB
Resistance to alcalis	EN ISO 10545-13	GLB
Resistance to cleaning products	EN ISO 10545-13	GB
Resistance to chemical products in swimming pool water	EN ISO 10545-13	GB
Stains resistance	EN ISO 10545-14	3



KINWOOD BEECH RECT 120X280

REFERENCE	SIZE (cm)	THICKNESS (mm)	GROUP
A040486	120X280	6,40	PC BIA GL

DIMENSIONS AND SURFACE PROPERTIES

Size, thickness, side straightness, flatness, orthogonality	UNE-EN 14411	It accomplished all requirements
---	--------------	----------------------------------

PHYSICAL PROPERTIES

Water absorption capacity	EN ISO 10545-03	< 0,5%
Flexion resistance	EN ISO 10545-04	=> 40 N/mm ²
Thermal shock resistance	EN ISO 10545-09	It stands the test
Frost resistance	EN ISO 10545-12	It stands the test

CHEMICAL PROPERTIES

Resistance to acids	EN ISO 10545-13	GLA
Resistance to alcalis	EN ISO 10545-13	GLA
Resistance to cleaning products	EN ISO 10545-13	GA
Resistance to chemical products in swimming pool water	EN ISO 10545-13	GA
Stains resistance	EN ISO 10545-14	3

ANTI-SLIP CHARACTERISTICS

Slip resistance (DCOF)	ANSI A326.3	0,42
------------------------	-------------	------

KINWOOD BEECH RECT 22X120

REFERENCE	SIZE (cm)	THICKNESS (mm)	GROUP
A040396	22X120	7,40	PC BIA GL



DIMENSIONS AND SURFACE PROPERTIES

Size, thickness, side straightness, flatness, orthogonality	UNE-EN 14411	It accomplished all requirements
---	--------------	----------------------------------

PHYSICAL PROPERTIES

Water absorption capacity	EN ISO 10545-03	< 0,5%
Flexion resistance	EN ISO 10545-04	=> 35 N/mm ²
Abrasion resistance (glazed Ceramic)	EN ISO10545-07	IV
Thermal shock resistance	EN ISO 10545-09	It stands the test
Cracking resistance	EN ISO 10545-11	It stands the test
Frost resistance	EN ISO 10545-12	It stands the test

CHEMICAL PROPERTIES

Resistance to acids	EN ISO 10545-13	GHB
Resistance to alcalis	EN ISO 10545-13	GHB
Resistance to cleaning products	EN ISO 10545-13	GHB
Resistance to chemical products in swimming pool water	EN ISO 10545-13	GHB
Stains resistance	EN ISO 10545-14	5

ANTI-SLIP CHARACTERISTICS

Slip resistance (Rd)	UNE-EN 16165-C	Class 2
----------------------	----------------	---------

CARMEN

true tiles

CHEVRON KINWOOD BEECH 8,5X44

REFERENCE	SIZE (cm)	THICKNESS (mm)	GROUP
A040268	8,5X44	10,10	PC BIA GL



DIMENSIONS AND SURFACE PROPERTIES

Size, thickness, side straightness, flatness, orthogonality	UNE-EN 14411	It accomplished all requirements
---	--------------	----------------------------------

PHYSICAL PROPERTIES

Water absorption capacity	EN ISO 10545-03	< 0,5%
Flexion resistance	EN ISO 10545-04	=> 35 N/mm ²
Abrasion resistance (glazed Ceramic)	EN ISO 10545-07	II
Thermal shock resistance	EN ISO 10545-09	It stands the test
Frost resistance	EN ISO 10545-12	It stands the test

CHEMICAL PROPERTIES

Resistance to acids	EN ISO 10545-13	GLA
Resistance to alcalis	EN ISO 10545-13	GHA
Resistance to cleaning products	EN ISO 10545-13	GA
Resistance to chemical products in swimming pool water	EN ISO 10545-13	GA
Stains resistance	EN ISO 10545-14	5

ROD. KINWOOD BEECH 8X60

REFERENCE	SIZE (cm)	THICKNESS (mm)	GROUP
A040909	8X60	8,20	PC BIA GL



DIMENSIONS AND SURFACE PROPERTIES

Size, thickness, side straightness, flatness, orthogonality UNE-EN 14411 It accomplished all requirements

PHYSICAL PROPERTIES

Water absorption capacity	EN ISO 10545-03	< 0,5%
Flexion resistance	EN ISO 10545-04	=> 35 N/mm ²
Thermal shock resistance	EN ISO 10545-09	It stands the test
Cracking resistance	EN ISO 10545-11	It stands the test
Frost resistance	EN ISO 10545-12	It stands the test

CHEMICAL PROPERTIES

Stains resistance EN ISO 10545-14 5

PELDAÑO RECTO C1 KINWOOD BEECH 33X120

REFERENCE	SIZE (cm)	THICKNESS (mm)	GROUP
A040423	33X120	32,40	EXTRUSI



DIMENSIONS AND SURFACE PROPERTIES

PHYSICAL PROPERTIES

Frost resistance

EN ISO 10545-12

It stands the test

CHEMICAL PROPERTIES



KINWOOD WALNUT RECT 120X280

REFERENCE	SIZE (cm)	THICKNESS (mm)	GROUP
A040487	120X280	6,20	PC BIA GL

DIMENSIONS AND SURFACE PROPERTIES

Size, thickness, side straightness, flatness, orthogonality UNE-EN 14411 It accomplished all requirements

PHYSICAL PROPERTIES

Water absorption capacity	EN ISO 10545-03	< 0,5%
Flexion resistance	EN ISO 10545-04	=> 40 N/mm ²
Thermal shock resistance	EN ISO 10545-09	It stands the test
Frost resistance	EN ISO 10545-12	It stands the test

CHEMICAL PROPERTIES

Resistance to acids	EN ISO 10545-13	GLA
Resistance to alcalis	EN ISO 10545-13	GLA
Resistance to cleaning products	EN ISO 10545-13	GA
Resistance to chemical products in swimming pool water	EN ISO 10545-13	GA
Stains resistance	EN ISO 10545-14	3

ANTI-SLIP CHARACTERISTICS

Slip resistance (DCOF)	ANSI A326.3	0,42
------------------------	-------------	------

KINWOOD WALNUT RECT 22X120

REFERENCE	SIZE (cm)	THICKNESS (mm)	GROUP
A040399	22X120	7,40	PC BIA GL



DIMENSIONS AND SURFACE PROPERTIES

Size, thickness, side straightness, flatness, orthogonality UNE-EN 14411 It accomplished all requirements

PHYSICAL PROPERTIES

Water absorption capacity	EN ISO 10545-03	< 0,5%
Flexion resistance	EN ISO 10545-04	=> 35 N/mm ²
Abrasion resistance (glazed Ceramic)	EN ISO10545-07	IV
Thermal shock resistance	EN ISO 10545-09	It stands the test
Cracking resistance	EN ISO 10545-11	It stands the test
Frost resistance	EN ISO 10545-12	It stands the test

CHEMICAL PROPERTIES

Resistance to acids	EN ISO 10545-13	GHB
Resistance to alcalis	EN ISO 10545-13	GHB
Resistance to cleaning products	EN ISO 10545-13	GHB
Resistance to chemical products in swimming pool water	EN ISO 10545-13	GHB
Stains resistance	EN ISO 10545-14	5

ANTI-SLIP CHARACTERISTICS

Slip resistance (Rd) UNE-EN 16165-C Class 2

CHEVRON KINWOOD WALNUT

8,5X44

REFERENCE	SIZE (cm)	THICKNESS (mm)	GROUP
A040269	8,5X44	9,50	PC BIA GL



DIMENSIONS AND SURFACE PROPERTIES

Size, thickness, side straightness, flatness, orthogonality	UNE-EN 14411	It accomplished all requirements
---	--------------	----------------------------------

PHYSICAL PROPERTIES

Water absorption capacity	EN ISO 10545-03	< 0,5%
Flexion resistance	EN ISO 10545-04	=> 35 N/mm ²
Abrasion resistance (glazed Ceramic)	EN ISO10545-07	II
Thermal shock resistance	EN ISO 10545-09	It stands the test
Frost resistance	EN ISO 10545-12	It stands the test

CHEMICAL PROPERTIES

Resistance to acids	EN ISO 10545-13	GLA
Resistance to alcalis	EN ISO 10545-13	GHA
Resistance to cleaning products	EN ISO 10545-13	GA
Resistance to chemical products in swimming pool water	EN ISO 10545-13	GA
Stains resistance	EN ISO 10545-14	5

ROD. KINWOOD WALNUT 8X60

REFERENCE	SIZE (cm)	THICKNESS (mm)	GROUP
A040911	8X60	8,20	PC BIA GL



DIMENSIONS AND SURFACE PROPERTIES

Size, thickness, side straightness, flatness, orthogonality UNE-EN 14411 It accomplished all requirements

PHYSICAL PROPERTIES

Water absorption capacity	EN ISO 10545-03	< 0,5%
Flexion resistance	EN ISO 10545-04	=> 35 N/mm ²
Thermal shock resistance	EN ISO 10545-09	It stands the test
Cracking resistance	EN ISO 10545-11	It stands the test
Frost resistance	EN ISO 10545-12	It stands the test

CHEMICAL PROPERTIES

Stains resistance EN ISO 10545-14 5

PELDAÑO RECTO C1 KINWOOD WALNUT 33X120

REFERENCE	SIZE (cm)	THICKNESS (mm)	GROUP
A040424	33X120	32,60	EXTRUSI



DIMENSIONS AND SURFACE PROPERTIES

PHYSICAL PROPERTIES

Frost resistance

EN ISO 10545-12

It stands the test

CHEMICAL PROPERTIES



KINWOOD CEDAR RECT 120X280

REFERENCE	SIZE (cm)	THICKNESS (mm)	GROUP
A040488	120X280	6,10	PC BIA GL

DIMENSIONS AND SURFACE PROPERTIES

Size, thickness, side straightness, flatness, orthogonality	UNE-EN 14411	It accomplished all requirements
---	--------------	----------------------------------

PHYSICAL PROPERTIES

Water absorption capacity	EN ISO 10545-03	< 0,5%
Flexion resistance	EN ISO 10545-04	=> 40 N/mm ²
Thermal shock resistance	EN ISO 10545-09	It stands the test
Frost resistance	EN ISO 10545-12	It stands the test

CHEMICAL PROPERTIES

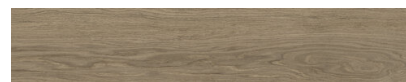
Resistance to acids	EN ISO 10545-13	GLA
Resistance to alcalis	EN ISO 10545-13	GLA
Resistance to cleaning products	EN ISO 10545-13	GA
Resistance to chemical products in swimming pool water	EN ISO 10545-13	GA
Stains resistance	EN ISO 10545-14	3

ANTI-SLIP CHARACTERISTICS

Slip resistance (DCOF)	ANSI A326.3	0,42
------------------------	-------------	------

KINWOOD CEDAR RECT 22X120

REFERENCE	SIZE (cm)	THICKNESS (mm)	GROUP
A040400	22X120	7,40	PC BIA GL



DIMENSIONS AND SURFACE PROPERTIES

Size, thickness, side straightness, flatness, orthogonality	UNE-EN 14411	It accomplished all requirements
---	--------------	----------------------------------

PHYSICAL PROPERTIES

Water absorption capacity	EN ISO 10545-03	< 0,5%
Flexion resistance	EN ISO 10545-04	=> 35 N/mm ²
Abrasion resistance (glazed Ceramic)	EN ISO10545-07	IV
Thermal shock resistance	EN ISO 10545-09	It stands the test
Cracking resistance	EN ISO 10545-11	It stands the test
Frost resistance	EN ISO 10545-12	It stands the test

CHEMICAL PROPERTIES

Resistance to acids	EN ISO 10545-13	GHB
Resistance to alcalis	EN ISO 10545-13	GHB
Resistance to cleaning products	EN ISO 10545-13	GHB
Resistance to chemical products in swimming pool water	EN ISO 10545-13	GHB
Stains resistance	EN ISO 10545-14	5

ANTI-SLIP CHARACTERISTICS

Slip resistance (Rd)	UNE-EN 16165-C	Class 2
----------------------	----------------	---------

CARMEN

true tiles

CHEVRON KINWOOD CEDAR 8,5X44

REFERENCE	SIZE (cm)	THICKNESS (mm)	GROUP
A040270	8,5X44	9,40	PC BIA GL



DIMENSIONS AND SURFACE PROPERTIES

Size, thickness, side straightness, flatness, orthogonality UNE-EN 14411 It accomplished all requirements

PHYSICAL PROPERTIES

Water absorption capacity	EN ISO 10545-03	< 0,5%
Flexion resistance	EN ISO 10545-04	=> 35 N/mm ²
Abrasion resistance (glazed Ceramic)	EN ISO 10545-07	II
Thermal shock resistance	EN ISO 10545-09	It stands the test
Frost resistance	EN ISO 10545-12	It stands the test

CHEMICAL PROPERTIES

Resistance to acids	EN ISO 10545-13	GLA
Resistance to alkalis	EN ISO 10545-13	GHA
Resistance to cleaning products	EN ISO 10545-13	GA
Resistance to chemical products in swimming pool water	EN ISO 10545-13	GA
Stains resistance	EN ISO 10545-14	5

ROD. KINWOOD CEDAR 8X60

REFERENCE	SIZE (cm)	THICKNESS (mm)	GROUP
A040910	8X60	8,20	PC BIA GL



DIMENSIONS AND SURFACE PROPERTIES

Size, thickness, side straightness, flatness, orthogonality	UNE-EN 14411	It accomplished all requirements
---	--------------	----------------------------------

PHYSICAL PROPERTIES

Water absorption capacity	EN ISO 10545-03	< 0,5%
Flexion resistance	EN ISO 10545-04	=> 35 N/mm ²
Thermal shock resistance	EN ISO 10545-09	It stands the test
Cracking resistance	EN ISO 10545-11	It stands the test
Frost resistance	EN ISO 10545-12	It stands the test

CHEMICAL PROPERTIES

Stains resistance	EN ISO 10545-14	5
-------------------	-----------------	---

PELDAÑO RECTO C1 KINWOOD CEDAR 33X120

REFERENCE	SIZE (cm)	THICKNESS (mm)	GROUP
A040425	33X120	32,60	EXTRUSI



DIMENSIONS AND SURFACE PROPERTIES

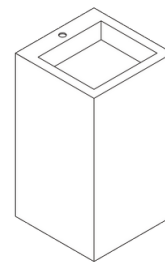
PHYSICAL PROPERTIES

Frost resistance

EN ISO 10545-12

It stands the test

CHEMICAL PROPERTIES



LAVABO DE PIE ROMA

REFERENCE	SIZE (cm)	THICKNESS (mm)	GROUP
A040867		0,00	PC BIA GL

DIMENSIONS AND SURFACE PROPERTIES

PHYSICAL PROPERTIES

Frost resistance

EN ISO 10545-12

It stands the test

CHEMICAL PROPERTIES