

## RAW NAIVE SMOOTH RECT 120X120

REFERENCE	SIZE (cm)	THICKNESS (mm)	GROUP
<b>A040035</b>	120X120	10,50	PC BIA GL

### DIMENSIONS AND SURFACE PROPERTIES

Size, thickness, side straightness, flatness, orthogonality      UNE-EN 14411      It accomplished all requirements

### PHYSICAL PROPERTIES

Water absorption capacity	EN ISO 10545-03	< 0,5%
Flexion resistance	EN ISO 10545-04	=> 35 N/mm <sup>2</sup>
Abrasion resistance (glazed Ceramic)	EN ISO10545-07	III
Thermal shock resistance	EN ISO 10545-09	It stands the test
Cracking resistance	EN ISO 10545-11	It stands the test
Frost resistance	EN ISO 10545-12	It stands the test

### CHEMICAL PROPERTIES

Resistance to acids	EN ISO 10545-13	GLA
Resistance to alcalis	EN ISO 10545-13	GLA
Resistance to cleaning products	EN ISO 10545-13	GA
Resistance to chemical products in swimming pool water	EN ISO 10545-13	GA
Stains resistance	EN ISO 10545-14	5

### ANTI-SLIP CHARACTERISTICS

Slip resistance (Rd)      UNE-EN 16165-C      0.00

## RAW NAIVE SMOOTH RECT 60X120

REFERENCE	SIZE (cm)	THICKNESS (mm)	GROUP
<b>A039769</b>	60X120	9,00	PC BIA GL



### DIMENSIONS AND SURFACE PROPERTIES

Size, thickness, side straightness, flatness, orthogonality	UNE-EN 14411	It accomplished all requirements
---	--------------	----------------------------------

### PHYSICAL PROPERTIES

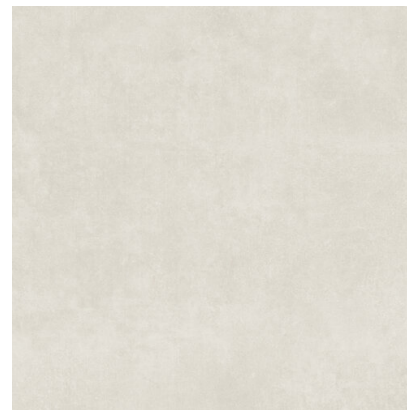
Water absorption capacity	EN ISO 10545-03	< 0,5%
Flexion resistance	EN ISO 10545-04	=> 35 N/mm <sup>2</sup>
Abrasion resistance (glazed Ceramic)	EN ISO 10545-07	III
Thermal shock resistance	EN ISO 10545-09	It stands the test
Cracking resistance	EN ISO 10545-11	It stands the test
Frost resistance	EN ISO 10545-12	It stands the test

### CHEMICAL PROPERTIES

Resistance to acids	EN ISO 10545-13	GLA
Resistance to alcalis	EN ISO 10545-13	GLA
Resistance to cleaning products	EN ISO 10545-13	GA
Resistance to chemical products in swimming pool water	EN ISO 10545-13	GA
Stains resistance	EN ISO 10545-14	5

### ANTI-SLIP CHARACTERISTICS

Slip resistance (Rd)	UNE-EN 16165-C	0.00
----------------------	----------------	------



## RAW NAIVE SMOOTH RECT 60X60

REFERENCE	SIZE (cm)	THICKNESS (mm)	GROUP
<b>A040372</b>	60X60	9,50	PC BIA GL

### DIMENSIONS AND SURFACE PROPERTIES

Size, thickness, side straightness, flatness, orthogonality	UNE-EN 14411	It accomplished all requirements
---	--------------	----------------------------------

### PHYSICAL PROPERTIES

Water absorption capacity	EN ISO 10545-03	< 0,5%
Flexion resistance	EN ISO 10545-04	=> 35 N/mm <sup>2</sup>
Abrasion resistance (glazed Ceramic)	EN ISO10545-07	III
Thermal shock resistance	EN ISO 10545-09	It stands the test
Cracking resistance	EN ISO 10545-11	It stands the test
Frost resistance	EN ISO 10545-12	It stands the test

### CHEMICAL PROPERTIES

Resistance to acids	EN ISO 10545-13	GLA
Resistance to alcalis	EN ISO 10545-13	GLA
Resistance to cleaning products	EN ISO 10545-13	GA
Resistance to chemical products in swimming pool water	EN ISO 10545-13	GA
Stains resistance	EN ISO 10545-14	5

### ANTI-SLIP CHARACTERISTICS

Slip resistance (Rd)	UNE-EN 16165-C	0.00
----------------------	----------------	------

# APE

best for you



## DECOR SET(2) RAW NAIVE 60X120

REFERENCE	SIZE (cm)	THICKNESS (mm)	GROUP
<b>A039789</b>	60X120	10,40	PC BIA GL

### DIMENSIONS AND SURFACE PROPERTIES

### PHYSICAL PROPERTIES

Frost resistance

EN ISO 10545-12

It stands the test

### CHEMICAL PROPERTIES

# APE

best for you



## DECOR SET(2) AB TROPICAL 60X120

REFERENCE	SIZE (cm)	THICKNESS (mm)	GROUP
<b>A039798</b>	60X120	10,50	PC BIA GL

### DIMENSIONS AND SURFACE PROPERTIES

### PHYSICAL PROPERTIES

Frost resistance

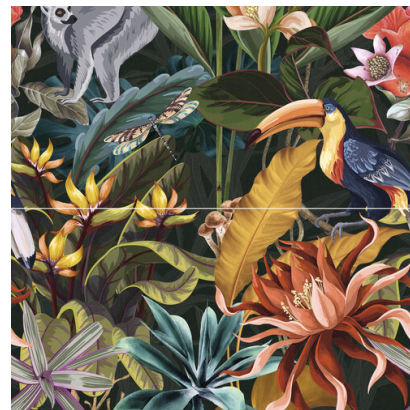
EN ISO 10545-12

It stands the test

### CHEMICAL PROPERTIES

# APE

best for you



## DECOR SET(2) CD TROPICAL 60X120

REFERENCE	SIZE (cm)	THICKNESS (mm)	GROUP
<b>A039799</b>	60X120	10,50	PC BIA GL

### DIMENSIONS AND SURFACE PROPERTIES

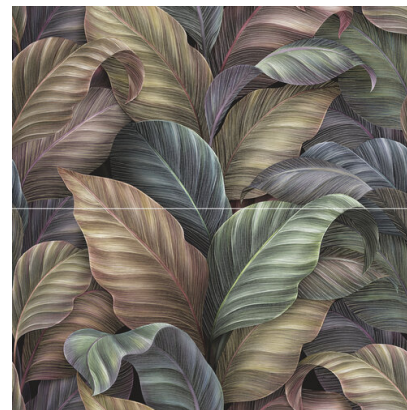
### PHYSICAL PROPERTIES

Frost resistance

EN ISO 10545-12

It stands the test

### CHEMICAL PROPERTIES



## DECOR SET(2) FOLLAJE 60X120

REFERENCE	SIZE (cm)	THICKNESS (mm)	GROUP
<b>A039800</b>	60X120	10,40	PC BIA GL

### DIMENSIONS AND SURFACE PROPERTIES

### PHYSICAL PROPERTIES

Frost resistance

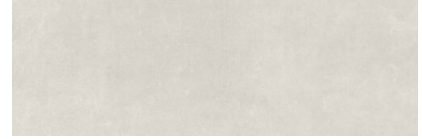
EN ISO 10545-12

It stands the test

### CHEMICAL PROPERTIES

## RAW NAIVE RECT 30X90

REFERENCE	SIZE (cm)	THICKNESS (mm)	GROUP
<b>A040363</b>	30X90	8,90	REVESTI



### DIMENSIONS AND SURFACE PROPERTIES

Size, thickness, side straightness, flatness, orthogonality      UNE-EN 14411      It accomplished all requirements

### PHYSICAL PROPERTIES

Water absorption capacity	EN ISO 10545-03	>10%
Flexion resistance	EN ISO 10545-04	=>12 N/mm <sup>2</sup>
Thermal shock resistance	EN ISO 10545-09	It stands the test
Cracking resistance	EN ISO 10545-11	It stands the test

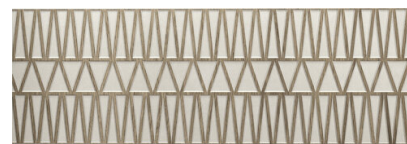
### CHEMICAL PROPERTIES

Resistance to acids	EN ISO 10545-13	GHB
Resistance to alcalis	EN ISO 10545-13	GLB
Resistance to cleaning products	EN ISO 10545-13	GB
Resistance to chemical products in swimming pool water	EN ISO 10545-13	GB
Stains resistance	EN ISO 10545-14	3



## LATTICE NAIVE RECT 30X90

REFERENCE	SIZE (cm)	THICKNESS (mm)	GROUP
<b>A040433</b>	30X90	10,30	REVESTI



### DIMENSIONS AND SURFACE PROPERTIES

Size, thickness, side straightness, flatness, orthogonality	UNE-EN 14411	It accomplished all requirements
---	--------------	----------------------------------

### PHYSICAL PROPERTIES

Water absorption capacity	EN ISO 10545-03	>10%
Flexion resistance	EN ISO 10545-04	=>12 N/mm <sup>2</sup>
Thermal shock resistance	EN ISO 10545-09	It stands the test
Cracking resistance	EN ISO 10545-11	It stands the test

### CHEMICAL PROPERTIES

Resistance to acids	EN ISO 10545-13	GHB
Resistance to alcalis	EN ISO 10545-13	GLB
Resistance to cleaning products	EN ISO 10545-13	GB
Resistance to chemical products in swimming pool water	EN ISO 10545-13	GB
Stains resistance	EN ISO 10545-14	3

## POLAN MIX NAIVE RECT 30X90

REFERENCE	SIZE (cm)	THICKNESS (mm)	GROUP
<b>A040369</b>	30X90	8,80	REVESTI



### DIMENSIONS AND SURFACE PROPERTIES

Size, thickness, side straightness, flatness, orthogonality	UNE-EN 14411	It accomplished all requirements
---	--------------	----------------------------------

### PHYSICAL PROPERTIES

Water absorption capacity	EN ISO 10545-03	>10%
Flexion resistance	EN ISO 10545-04	=>12 N/mm <sup>2</sup>
Thermal shock resistance	EN ISO 10545-09	It stands the test
Cracking resistance	EN ISO 10545-11	It stands the test
Frost resistance	EN ISO 10545-12	0.00

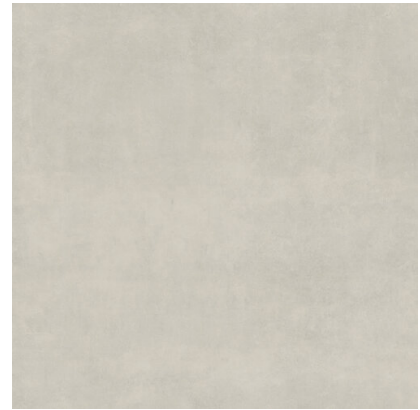
### CHEMICAL PROPERTIES

Resistance to acids	EN ISO 10545-13	GHB
Resistance to alcalis	EN ISO 10545-13	GLB
Resistance to cleaning products	EN ISO 10545-13	GB
Resistance to chemical products in swimming pool water	EN ISO 10545-13	GB
Stains resistance	EN ISO 10545-14	3

## RAW COTTON SMOOTH RECT

### 120X120

REFERENCE	SIZE (cm)	THICKNESS (mm)	GROUP
<b>A040036</b>	120X120	10,20	PC BIA GL



#### DIMENSIONS AND SURFACE PROPERTIES

Size, thickness, side straightness, flatness, orthogonality	UNE-EN 14411	It accomplished all requirements
---	--------------	----------------------------------

#### PHYSICAL PROPERTIES

Water absorption capacity	EN ISO 10545-03	< 0,5%
Flexion resistance	EN ISO 10545-04	=> 35 N/mm <sup>2</sup>
Abrasion resistance (glazed Ceramic)	EN ISO10545-07	III
Thermal shock resistance	EN ISO 10545-09	It stands the test
Cracking resistance	EN ISO 10545-11	It stands the test
Frost resistance	EN ISO 10545-12	It stands the test

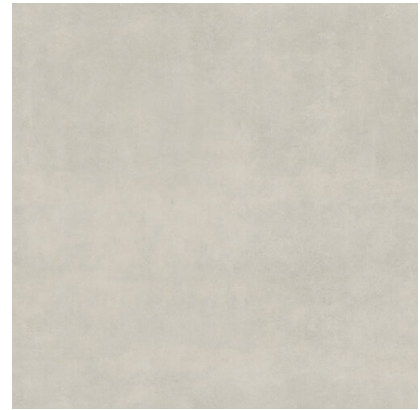
#### CHEMICAL PROPERTIES

Resistance to acids	EN ISO 10545-13	GLA
Resistance to alcalis	EN ISO 10545-13	GLA
Resistance to cleaning products	EN ISO 10545-13	GA
Resistance to chemical products in swimming pool water	EN ISO 10545-13	GA
Stains resistance	EN ISO 10545-14	5

#### ANTI-SLIP CHARACTERISTICS

Slip resistance (Rd)	UNE-EN 16165-C	0.00
----------------------	----------------	------

## ANTI-SLIP RAW COTTON RECT 120X120



REFERENCE	SIZE (cm)	THICKNESS (mm)	GROUP
<b>A040039</b>	120X120	10,00	PC BIA GL

### DIMENSIONS AND SURFACE PROPERTIES

Size, thickness, side straightness, flatness, orthogonality	UNE-EN 14411	It accomplished all requirements
---	--------------	----------------------------------

### PHYSICAL PROPERTIES

Water absorption capacity	EN ISO 10545-03	< 0,5%
Flexion resistance	EN ISO 10545-04	=> 35 N/mm <sup>2</sup>
Abrasion resistance (glazed Ceramic)	EN ISO10545-07	III
Thermal shock resistance	EN ISO 10545-09	It stands the test
Cracking resistance	EN ISO 10545-11	It stands the test
Frost resistance	EN ISO 10545-12	It stands the test

### CHEMICAL PROPERTIES

Resistance to acids	EN ISO 10545-13	GLA
Resistance to alcalis	EN ISO 10545-13	GLA
Resistance to cleaning products	EN ISO 10545-13	GA
Resistance to chemical products in swimming pool water	EN ISO 10545-13	GA
Stains resistance	EN ISO 10545-14	5

### ANTI-SLIP CHARACTERISTICS

Slip resistance (Rd)	UNE-EN 16165-C	Class 3
Slip resistance (R)	EN 16165-B	R11

## RAW COTTON SMOOTH RECT

### 60X120

REFERENCE	SIZE (cm)	THICKNESS (mm)	GROUP
<b>A039772</b>	60X120	10,20	PC BIA GL



#### DIMENSIONS AND SURFACE PROPERTIES

Size, thickness, side straightness, flatness, orthogonality	UNE-EN 14411	It accomplished all requirements
---	--------------	----------------------------------

#### PHYSICAL PROPERTIES

Water absorption capacity	EN ISO 10545-03	< 0,5%
Flexion resistance	EN ISO 10545-04	=> 35 N/mm <sup>2</sup>
Abrasion resistance (glazed Ceramic)	EN ISO10545-07	III
Thermal shock resistance	EN ISO 10545-09	It stands the test
Cracking resistance	EN ISO 10545-11	It stands the test
Frost resistance	EN ISO 10545-12	It stands the test

#### CHEMICAL PROPERTIES

Resistance to acids	EN ISO 10545-13	GLA
Resistance to alcalis	EN ISO 10545-13	GLA
Resistance to cleaning products	EN ISO 10545-13	GA
Resistance to chemical products in swimming pool water	EN ISO 10545-13	GA
Stains resistance	EN ISO 10545-14	5

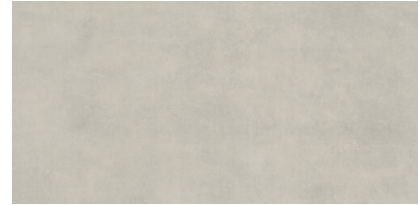
#### ANTI-SLIP CHARACTERISTICS

Slip resistance (Rd)	UNE-EN 16165-C	0.00
----------------------	----------------	------

## ANTI-SLIP RAW COTTON RECT

### 60X120

REFERENCE	SIZE (cm)	THICKNESS (mm)	GROUP
<b>A039774</b>	60X120	10,30	PC BIA GL



#### DIMENSIONS AND SURFACE PROPERTIES

Size, thickness, side straightness, flatness, orthogonality	UNE-EN 14411	It accomplished all requirements
---	--------------	----------------------------------

#### PHYSICAL PROPERTIES

Water absorption capacity	EN ISO 10545-03	< 0,5%
Flexion resistance	EN ISO 10545-04	=> 35 N/mm <sup>2</sup>
Abrasion resistance (glazed Ceramic)	EN ISO10545-07	III
Thermal shock resistance	EN ISO 10545-09	It stands the test
Cracking resistance	EN ISO 10545-11	It stands the test
Frost resistance	EN ISO 10545-12	It stands the test

#### CHEMICAL PROPERTIES

Resistance to acids	EN ISO 10545-13	GLA
Resistance to alcalis	EN ISO 10545-13	GLA
Resistance to cleaning products	EN ISO 10545-13	GA
Resistance to chemical products in swimming pool water	EN ISO 10545-13	GA
Stains resistance	EN ISO 10545-14	5

#### ANTI-SLIP CHARACTERISTICS

Slip resistance (Rd)	UNE-EN 16165-C	Class 3
Slip resistance (R)	EN 16165-B	0.00



## RAW COTTON SMOOTH RECT 60X60

REFERENCE	SIZE (cm)	THICKNESS (mm)	GROUP
<b>A040373</b>	60X60	9,30	PC BIA GL

### DIMENSIONS AND SURFACE PROPERTIES

Size, thickness, side straightness, flatness, orthogonality	UNE-EN 14411	It accomplished all requirements
---	--------------	----------------------------------

### PHYSICAL PROPERTIES

Water absorption capacity	EN ISO 10545-03	< 0,5%
Flexion resistance	EN ISO 10545-04	=> 35 N/mm <sup>2</sup>
Abrasion resistance (glazed Ceramic)	EN ISO10545-07	III
Thermal shock resistance	EN ISO 10545-09	It stands the test
Cracking resistance	EN ISO 10545-11	It stands the test
Frost resistance	EN ISO 10545-12	It stands the test

### CHEMICAL PROPERTIES

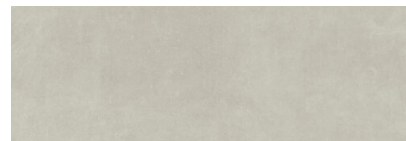
Resistance to acids	EN ISO 10545-13	GLA
Resistance to alcalis	EN ISO 10545-13	GLA
Resistance to cleaning products	EN ISO 10545-13	GA
Resistance to chemical products in swimming pool water	EN ISO 10545-13	GA
Stains resistance	EN ISO 10545-14	5

### ANTI-SLIP CHARACTERISTICS

Slip resistance (Rd)	UNE-EN 16165-C	0.00
----------------------	----------------	------

## RAW COTTON RECT 30X90

REFERENCE	SIZE (cm)	THICKNESS (mm)	GROUP
<b>A040364</b>	30X90	8,90	REVESTI



### DIMENSIONS AND SURFACE PROPERTIES

Size, thickness, side straightness, flatness, orthogonality      UNE-EN 14411      It accomplished all requirements

### PHYSICAL PROPERTIES

Water absorption capacity	EN ISO 10545-03	>10%
Flexion resistance	EN ISO 10545-04	=>12 N/mm <sup>2</sup>
Thermal shock resistance	EN ISO 10545-09	It stands the test
Cracking resistance	EN ISO 10545-11	It stands the test

### CHEMICAL PROPERTIES

Resistance to acids	EN ISO 10545-13	GHB
Resistance to alcalis	EN ISO 10545-13	GLB
Resistance to cleaning products	EN ISO 10545-13	GB
Resistance to chemical products in swimming pool water	EN ISO 10545-13	GB
Stains resistance	EN ISO 10545-14	3



## TARIMA COTTON RECT 30X90

REFERENCE	SIZE (cm)	THICKNESS (mm)	GROUP
<b>A040367</b>	30X90	10,50	REVESTI



### DIMENSIONS AND SURFACE PROPERTIES

Size, thickness, side straightness, flatness, orthogonality	UNE-EN 14411	It accomplished all requirements
---	--------------	----------------------------------

### PHYSICAL PROPERTIES

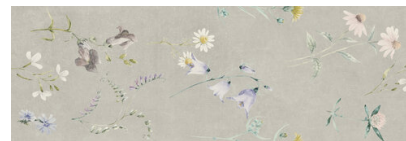
Water absorption capacity	EN ISO 10545-03	>10%
Flexion resistance	EN ISO 10545-04	=>12 N/mm <sup>2</sup>
Thermal shock resistance	EN ISO 10545-09	It stands the test
Cracking resistance	EN ISO 10545-11	It stands the test

### CHEMICAL PROPERTIES

Resistance to acids	EN ISO 10545-13	GHB
Resistance to alcalis	EN ISO 10545-13	GLB
Resistance to cleaning products	EN ISO 10545-13	GB
Resistance to chemical products in swimming pool water	EN ISO 10545-13	GB
Stains resistance	EN ISO 10545-14	3

## POLAN MIX COTTON RECT 30X90

REFERENCE	SIZE (cm)	THICKNESS (mm)	GROUP
<b>A040370</b>	30X90	9,20	REVESTI



### DIMENSIONS AND SURFACE PROPERTIES

Size, thickness, side straightness, flatness, orthogonality	UNE-EN 14411	It accomplished all requirements
---	--------------	----------------------------------

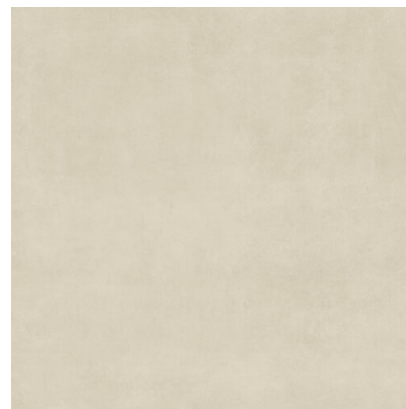
### PHYSICAL PROPERTIES

Water absorption capacity	EN ISO 10545-03	>10%
Flexion resistance	EN ISO 10545-04	=>12 N/mm <sup>2</sup>
Thermal shock resistance	EN ISO 10545-09	It stands the test
Cracking resistance	EN ISO 10545-11	It stands the test

### CHEMICAL PROPERTIES

Resistance to acids	EN ISO 10545-13	GHB
Resistance to alcalis	EN ISO 10545-13	GLB
Resistance to cleaning products	EN ISO 10545-13	GB
Resistance to chemical products in swimming pool water	EN ISO 10545-13	GB
Stains resistance	EN ISO 10545-14	3

## RAW TOASTED SMOOTH RECT 120X120



REFERENCE	SIZE (cm)	THICKNESS (mm)	GROUP
<b>A040037</b>	120X120	10,00	PC BIA GL

### DIMENSIONS AND SURFACE PROPERTIES

Size, thickness, side straightness, flatness, orthogonality	UNE-EN 14411	It accomplished all requirements
---	--------------	----------------------------------

### PHYSICAL PROPERTIES

Water absorption capacity	EN ISO 10545-03	< 0,5%
Flexion resistance	EN ISO 10545-04	=> 35 N/mm <sup>2</sup>
Abrasion resistance (glazed Ceramic)	EN ISO10545-07	III
Thermal shock resistance	EN ISO 10545-09	It stands the test
Cracking resistance	EN ISO 10545-11	It stands the test
Frost resistance	EN ISO 10545-12	It stands the test

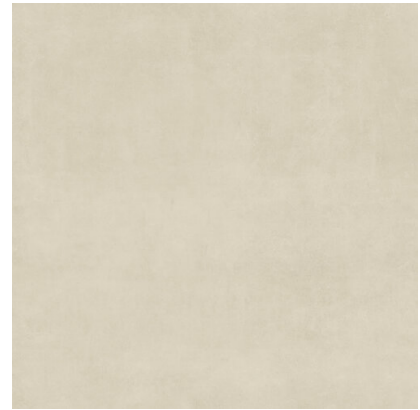
### CHEMICAL PROPERTIES

Resistance to acids	EN ISO 10545-13	GLA
Resistance to alcalis	EN ISO 10545-13	GLA
Resistance to cleaning products	EN ISO 10545-13	GA
Resistance to chemical products in swimming pool water	EN ISO 10545-13	GA
Stains resistance	EN ISO 10545-14	5

### ANTI-SLIP CHARACTERISTICS

Slip resistance (Rd)	UNE-EN 16165-C	0.00
----------------------	----------------	------

## ANTI-SLIP RAW TOASTED RECT 120X120



REFERENCE	SIZE (cm)	THICKNESS (mm)	GROUP
<b>A040040</b>	120X120	9,60	PC BIA GL

### DIMENSIONS AND SURFACE PROPERTIES

Size, thickness, side straightness, flatness, orthogonality	UNE-EN 14411	It accomplished all requirements
---	--------------	----------------------------------

### PHYSICAL PROPERTIES

Water absorption capacity	EN ISO 10545-03	< 0,5%
Flexion resistance	EN ISO 10545-04	=> 35 N/mm <sup>2</sup>
Abrasion resistance (glazed Ceramic)	EN ISO10545-07	III
Thermal shock resistance	EN ISO 10545-09	It stands the test
Cracking resistance	EN ISO 10545-11	It stands the test
Frost resistance	EN ISO 10545-12	It stands the test

### CHEMICAL PROPERTIES

Resistance to acids	EN ISO 10545-13	GLA
Resistance to alcalis	EN ISO 10545-13	GLA
Resistance to cleaning products	EN ISO 10545-13	GA
Resistance to chemical products in swimming pool water	EN ISO 10545-13	GA
Stains resistance	EN ISO 10545-14	5

### ANTI-SLIP CHARACTERISTICS

Slip resistance (Rd)	UNE-EN 16165-C	Class 3
Slip resistance (R)	EN 16165-B	R11

## RAW TOASTED SMOOTH RECT

### 60X120

REFERENCE	SIZE (cm)	THICKNESS (mm)	GROUP
<b>A039781</b>	60X120	10,40	PC BIA GL



#### DIMENSIONS AND SURFACE PROPERTIES

Size, thickness, side straightness, flatness, orthogonality	UNE-EN 14411	It accomplished all requirements
---	--------------	----------------------------------

#### PHYSICAL PROPERTIES

Water absorption capacity	EN ISO 10545-03	< 0,5%
Flexion resistance	EN ISO 10545-04	=> 35 N/mm <sup>2</sup>
Abrasion resistance (glazed Ceramic)	EN ISO10545-07	III
Thermal shock resistance	EN ISO 10545-09	It stands the test
Cracking resistance	EN ISO 10545-11	It stands the test
Frost resistance	EN ISO 10545-12	It stands the test

#### CHEMICAL PROPERTIES

Resistance to acids	EN ISO 10545-13	GLA
Resistance to alcalis	EN ISO 10545-13	GLA
Resistance to cleaning products	EN ISO 10545-13	GA
Resistance to chemical products in swimming pool water	EN ISO 10545-13	GA
Stains resistance	EN ISO 10545-14	5

#### ANTI-SLIP CHARACTERISTICS

Slip resistance (Rd)	UNE-EN 16165-C	0.00
----------------------	----------------	------

## ANTI- SLIP RAW TOASTED RECT 60X120

REFERENCE	SIZE (cm)	THICKNESS (mm)	GROUP
<b>A039783</b>	60X120	10,50	PC BIA GL



### DIMENSIONS AND SURFACE PROPERTIES

Size, thickness, side straightness, flatness, orthogonality	UNE-EN 14411	It accomplished all requirements
---	--------------	----------------------------------

### PHYSICAL PROPERTIES

Water absorption capacity	EN ISO 10545-03	< 0,5%
Flexion resistance	EN ISO 10545-04	=> 35 N/mm <sup>2</sup>
Abrasion resistance (glazed Ceramic)	EN ISO10545-07	III
Thermal shock resistance	EN ISO 10545-09	It stands the test
Cracking resistance	EN ISO 10545-11	It stands the test
Frost resistance	EN ISO 10545-12	It stands the test

### CHEMICAL PROPERTIES

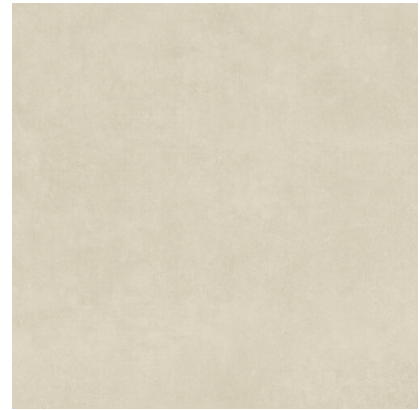
Resistance to acids	EN ISO 10545-13	GLA
Resistance to alcalis	EN ISO 10545-13	GLA
Resistance to cleaning products	EN ISO 10545-13	GA
Resistance to chemical products in swimming pool water	EN ISO 10545-13	GA
Stains resistance	EN ISO 10545-14	5

### ANTI-SLIP CHARACTERISTICS

Slip resistance (Rd)	UNE-EN 16165-C	Class 3
Slip resistance (R)	EN 16165-B	0.00

## RAW TOASTED SMOOTH RECT

### 60X60



REFERENCE	SIZE (cm)	THICKNESS (mm)	GROUP
<b>A040374</b>	60X60	9,30	PC BIA GL

#### DIMENSIONS AND SURFACE PROPERTIES

Size, thickness, side straightness, flatness, orthogonality	UNE-EN 14411	It accomplished all requirements
---	--------------	----------------------------------

#### PHYSICAL PROPERTIES

Water absorption capacity	EN ISO 10545-03	< 0,5%
Flexion resistance	EN ISO 10545-04	=> 35 N/mm <sup>2</sup>
Abrasion resistance (glazed Ceramic)	EN ISO10545-07	III
Thermal shock resistance	EN ISO 10545-09	It stands the test
Cracking resistance	EN ISO 10545-11	It stands the test
Frost resistance	EN ISO 10545-12	It stands the test

#### CHEMICAL PROPERTIES

Resistance to acids	EN ISO 10545-13	GLA
Resistance to alcalis	EN ISO 10545-13	GLA
Resistance to cleaning products	EN ISO 10545-13	GA
Resistance to chemical products in swimming pool water	EN ISO 10545-13	GA
Stains resistance	EN ISO 10545-14	5

#### ANTI-SLIP CHARACTERISTICS

Slip resistance (Rd)	UNE-EN 16165-C	0.00
----------------------	----------------	------

## RAW TOASTED RECT 30X90

REFERENCE	SIZE (cm)	THICKNESS (mm)	GROUP
<b>A040365</b>	30X90	8,90	REVESTI



### DIMENSIONS AND SURFACE PROPERTIES

Size, thickness, side straightness, flatness, orthogonality      UNE-EN 14411      It accomplished all requirements

### PHYSICAL PROPERTIES

Water absorption capacity	EN ISO 10545-03	>10%
Flexion resistance	EN ISO 10545-04	=>12 N/mm <sup>2</sup>
Thermal shock resistance	EN ISO 10545-09	It stands the test
Cracking resistance	EN ISO 10545-11	It stands the test

### CHEMICAL PROPERTIES

Resistance to acids	EN ISO 10545-13	GHB
Resistance to alcalis	EN ISO 10545-13	GLB
Resistance to cleaning products	EN ISO 10545-13	GB
Resistance to chemical products in swimming pool water	EN ISO 10545-13	GB
Stains resistance	EN ISO 10545-14	3



## LATTICE TOASTED RECT 30X90

REFERENCE	SIZE (cm)	THICKNESS (mm)	GROUP
<b>A040434</b>	30X90	10,60	REVESTI



### DIMENSIONS AND SURFACE PROPERTIES

Size, thickness, side straightness, flatness, orthogonality	UNE-EN 14411	It accomplished all requirements
---	--------------	----------------------------------

### PHYSICAL PROPERTIES

Water absorption capacity	EN ISO 10545-03	>10%
Flexion resistance	EN ISO 10545-04	=>12 N/mm <sup>2</sup>
Thermal shock resistance	EN ISO 10545-09	It stands the test
Cracking resistance	EN ISO 10545-11	It stands the test

### CHEMICAL PROPERTIES

Resistance to acids	EN ISO 10545-13	GHB
Resistance to alcalis	EN ISO 10545-13	GLB
Resistance to cleaning products	EN ISO 10545-13	GB
Resistance to chemical products in swimming pool water	EN ISO 10545-13	GB
Stains resistance	EN ISO 10545-14	3

## TARIMA TOASTED RECT 30X90

REFERENCE	SIZE (cm)	THICKNESS (mm)	GROUP
<b>A040368</b>	30X90	10,80	REVESTI



### DIMENSIONS AND SURFACE PROPERTIES

Size, thickness, side straightness, flatness, orthogonality	UNE-EN 14411	It accomplished all requirements
---	--------------	----------------------------------

### PHYSICAL PROPERTIES

Water absorption capacity	EN ISO 10545-03	>10%
Flexion resistance	EN ISO 10545-04	=>12 N/mm <sup>2</sup>
Thermal shock resistance	EN ISO 10545-09	It stands the test
Cracking resistance	EN ISO 10545-11	It stands the test

### CHEMICAL PROPERTIES

Resistance to acids	EN ISO 10545-13	GHB
Resistance to alcalis	EN ISO 10545-13	GLB
Resistance to cleaning products	EN ISO 10545-13	GB
Resistance to chemical products in swimming pool water	EN ISO 10545-13	GB
Stains resistance	EN ISO 10545-14	3

## POLAN MIX TOASTED RECT 30X90

REFERENCE	SIZE (cm)	THICKNESS (mm)	GROUP
<b>A040371</b>	30X90	8,70	REVESTI



### DIMENSIONS AND SURFACE PROPERTIES

Size, thickness, side straightness, flatness, orthogonality	UNE-EN 14411	It accomplished all requirements
---	--------------	----------------------------------

### PHYSICAL PROPERTIES

Water absorption capacity	EN ISO 10545-03	>10%
Flexion resistance	EN ISO 10545-04	=>12 N/mm <sup>2</sup>
Thermal shock resistance	EN ISO 10545-09	It stands the test
Cracking resistance	EN ISO 10545-11	It stands the test
Frost resistance	EN ISO 10545-12	0.00

### CHEMICAL PROPERTIES

Resistance to acids	EN ISO 10545-13	GHB
Resistance to alcalis	EN ISO 10545-13	GLB
Resistance to cleaning products	EN ISO 10545-13	GB
Resistance to chemical products in swimming pool water	EN ISO 10545-13	GB
Stains resistance	EN ISO 10545-14	3

## TARIMA BLACK RECT 30X90

REFERENCE	SIZE (cm)	THICKNESS (mm)	GROUP
<b>A040671</b>	30X90	10,90	REVESTI



### DIMENSIONS AND SURFACE PROPERTIES

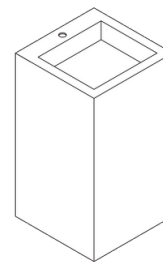
Size, thickness, side straightness, flatness, orthogonality	UNE-EN 14411	It accomplished all requirements
---	--------------	----------------------------------

### PHYSICAL PROPERTIES

Water absorption capacity	EN ISO 10545-03	>10%
Flexion resistance	EN ISO 10545-04	=>12 N/mm <sup>2</sup>
Thermal shock resistance	EN ISO 10545-09	It stands the test
Cracking resistance	EN ISO 10545-11	It stands the test

### CHEMICAL PROPERTIES

Resistance to acids	EN ISO 10545-13	GHB
Resistance to alcalis	EN ISO 10545-13	GLB
Resistance to cleaning products	EN ISO 10545-13	GB
Resistance to chemical products in swimming pool water	EN ISO 10545-13	GB
Stains resistance	EN ISO 10545-14	3



## LAVABO DE PIE ROMA

REFERENCE	SIZE (cm)	THICKNESS (mm)	GROUP
<b>A040867</b>		0,00	PC BIA GL

### DIMENSIONS AND SURFACE PROPERTIES

### PHYSICAL PROPERTIES

Frost resistance

EN ISO 10545-12

It stands the test

### CHEMICAL PROPERTIES