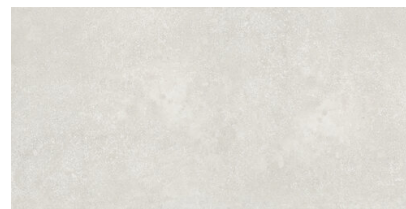


## THINK WHITE RECT 60X120

REFERENCE	SIZE (cm)	THICKNESS (mm)	GROUP
<b>A040327</b>	60X120	8,90	PC BIA GL



### DIMENSIONS AND SURFACE PROPERTIES

Size, thickness, side straightness, flatness, orthogonality	UNE-EN 14411	It accomplished all requirements
---	--------------	----------------------------------

### PHYSICAL PROPERTIES

Water absorption capacity	EN ISO 10545-03	< 0,5%
Flexion resistance	EN ISO 10545-04	=> 35 N/mm <sup>2</sup>
Abrasion resistance (glazed Ceramic)	EN ISO10545-07	IV
Thermal shock resistance	EN ISO 10545-09	It stands the test
Frost resistance	EN ISO 10545-12	It stands the test
UPEC Classification	UPEC Classification	U3S P3 E3 C2

### CHEMICAL PROPERTIES

Resistance to acids	EN ISO 10545-13	GLA
Resistance to alcalis	EN ISO 10545-13	GLA
Resistance to cleaning products	EN ISO 10545-13	GA
Resistance to chemical products in swimming pool water	EN ISO 10545-13	GA
Stains resistance	EN ISO 10545-14	3

### ANTI-SLIP CHARACTERISTICS

Slip resistance (R)	EN 16165-B	R10
Slip resistance (barefeet)	EN 16165-A	B

## ANTI-SLIP THINK WHITE RECT 60X120



REFERENCE	SIZE (cm)	THICKNESS (mm)	GROUP
<b>A040331</b>	60X120	8,30	PC BIA GL

### DIMENSIONS AND SURFACE PROPERTIES

Size, thickness, side straightness, flatness, orthogonality	UNE-EN 14411	It accomplished all requirements
---	--------------	----------------------------------

### PHYSICAL PROPERTIES

Water absorption capacity	EN ISO 10545-03	< 0,5%
Flexion resistance	EN ISO 10545-04	=> 35 N/mm <sup>2</sup>
Abrasion resistance (glazed Ceramic)	EN ISO10545-07	IV
Thermal shock resistance	EN ISO 10545-09	It stands the test
Frost resistance	EN ISO 10545-12	It stands the test
UPEC Classification	UPEC Classification	U3S P3 E3 C2

### CHEMICAL PROPERTIES

Resistance to acids	EN ISO 10545-13	GHB
Resistance to alcalis	EN ISO 10545-13	GHB
Resistance to cleaning products	EN ISO 10545-13	GHB
Resistance to chemical products in swimming pool water	EN ISO 10545-13	GHB
Stains resistance	EN ISO 10545-14	3

### ANTI-SLIP CHARACTERISTICS

Slip resistance (Rd)	UNE-EN 16165-C	Class 3
Slip resistance (R)	EN 16165-B	R11
Slip resistance (barefeet)	EN 16165-A	C



## THINK WHITE RECT 100X100

REFERENCE	SIZE (cm)	THICKNESS (mm)	GROUP
<b>A041108</b>	100X100	9,90	PC BIA GL

### DIMENSIONS AND SURFACE PROPERTIES

Size, thickness, side straightness, flatness, orthogonality	UNE-EN 14411	It accomplished all requirements
---	--------------	----------------------------------

### PHYSICAL PROPERTIES

Water absorption capacity	EN ISO 10545-03	< 0,5%
Flexion resistance	EN ISO 10545-04	=> 35 N/mm <sup>2</sup>
Abrasion resistance (glazed Ceramic)	EN ISO10545-07	IV
Thermal shock resistance	EN ISO 10545-09	It stands the test
Frost resistance	EN ISO 10545-12	It stands the test
UPEC Classification	UPEC Classification	U3S P3 E3 C2

### CHEMICAL PROPERTIES

Resistance to acids	EN ISO 10545-13	GLA
Resistance to alcalis	EN ISO 10545-13	GLA
Resistance to cleaning products	EN ISO 10545-13	GA
Resistance to chemical products in swimming pool water	EN ISO 10545-13	GA
Stains resistance	EN ISO 10545-14	3

### ANTI-SLIP CHARACTERISTICS

Slip resistance (R)	EN 16165-B	R10
Slip resistance (barefeet)	EN 16165-A	B

## ANTI-SLIP THINK WHITE RECT 100X100



REFERENCE	SIZE (cm)	THICKNESS (mm)	GROUP
<b>A041720</b>	100X100	9,70	PC BIA GL

### DIMENSIONS AND SURFACE PROPERTIES

Size, thickness, side straightness, flatness, orthogonality	UNE-EN 14411	It accomplished all requirements
---	--------------	----------------------------------

### PHYSICAL PROPERTIES

Water absorption capacity	EN ISO 10545-03	< 0,5%
Flexion resistance	EN ISO 10545-04	=> 35 N/mm <sup>2</sup>
Abrasion resistance (glazed Ceramic)	EN ISO10545-07	IV
Thermal shock resistance	EN ISO 10545-09	It stands the test
Cracking resistance	EN ISO 10545-11	It stands the test
Frost resistance	EN ISO 10545-12	It stands the test
UPEC Classification	UPEC Classification	U3S P3 E3 C2

### CHEMICAL PROPERTIES

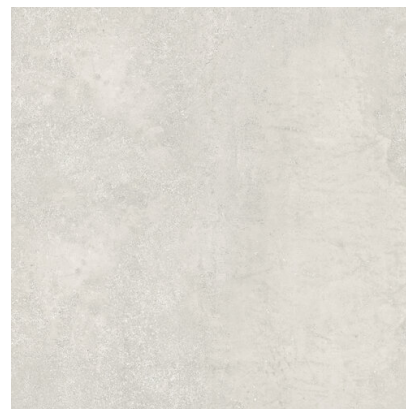
Resistance to acids	EN ISO 10545-13	GLA
Resistance to alcalis	EN ISO 10545-13	GHA
Resistance to cleaning products	EN ISO 10545-13	GA
Resistance to chemical products in swimming pool water	EN ISO 10545-13	GA
Stains resistance	EN ISO 10545-14	3

### ANTI-SLIP CHARACTERISTICS

Slip resistance (Rd)	UNE-EN 16165-C	Class 3
Slip resistance (R)	EN 16165-B	R11
Slip resistance (barefeet)	EN 16165-A	C

## HIGH THICKNESS THINK WHITE

### RECT 100X100



REFERENCE	SIZE (cm)	THICKNESS (mm)	GROUP
<b>A041112</b>	100X100	19,40	PC BIA GL

#### DIMENSIONS AND SURFACE PROPERTIES

Size, thickness, side straightness, flatness, orthogonality	UNE-EN 14411	It accomplished all requirements
---	--------------	----------------------------------

#### PHYSICAL PROPERTIES

Water absorption capacity	EN ISO 10545-03	< 0,5%
Flexion resistance	EN ISO 10545-04	=> 35 N/mm <sup>2</sup>
Abrasion resistance (glazed Ceramic)	EN ISO10545-07	IV
Thermal shock resistance	EN ISO 10545-09	It stands the test
Cracking resistance	EN ISO 10545-11	It stands the test
Frost resistance	EN ISO 10545-12	It stands the test
UPEC Classification	UPEC Classification	U3S P3 E3 C2

#### CHEMICAL PROPERTIES

Resistance to acids	EN ISO 10545-13	GLA
Resistance to alcalis	EN ISO 10545-13	GHA
Resistance to cleaning products	EN ISO 10545-13	GA
Resistance to chemical products in swimming pool water	EN ISO 10545-13	GA
Stains resistance	EN ISO 10545-14	3

#### ANTI-SLIP CHARACTERISTICS

Slip resistance (Rd)	UNE-EN 16165-C	Class 3
Slip resistance (R)	EN 16165-B	R11
Slip resistance (barefeet)	EN 16165-A	C



## THINK WHITE RECT 60X60

REFERENCE	SIZE (cm)	THICKNESS (mm)	GROUP
<b>A040573</b>	60X60	9,50	PC BIA GL

### DIMENSIONS AND SURFACE PROPERTIES

Size, thickness, side straightness, flatness, orthogonality	UNE-EN 14411	It accomplished all requirements
---	--------------	----------------------------------

### PHYSICAL PROPERTIES

Water absorption capacity	EN ISO 10545-03	< 0,5%
Flexion resistance	EN ISO 10545-04	=> 35 N/mm <sup>2</sup>
Abrasion resistance (glazed Ceramic)	EN ISO10545-07	IV
Thermal shock resistance	EN ISO 10545-09	It stands the test
Frost resistance	EN ISO 10545-12	It stands the test
UPEC Classification	UPEC Classification	U3S P3 E3 C2

### CHEMICAL PROPERTIES

Resistance to acids	EN ISO 10545-13	GLA
Resistance to alcalis	EN ISO 10545-13	GHA
Resistance to cleaning products	EN ISO 10545-13	GA
Resistance to chemical products in swimming pool water	EN ISO 10545-13	GA
Stains resistance	EN ISO 10545-14	3

### ANTI-SLIP CHARACTERISTICS

Slip resistance (R)	EN 16165-B	R10
Slip resistance (barefeet)	EN 16165-A	B

## ANTI-SLIP THINK WHITE RECT

### 60X60

REFERENCE	SIZE (cm)	THICKNESS (mm)	GROUP
<b>A041332</b>	60X60	0,00	PC BIA GL



#### DIMENSIONS AND SURFACE PROPERTIES

Size, thickness, side straightness, flatness, orthogonality	UNE-EN 14411	It accomplished all requirements
---	--------------	----------------------------------

#### PHYSICAL PROPERTIES

Water absorption capacity	EN ISO 10545-03	< 0,5%
Flexion resistance	EN ISO 10545-04	=> 35 N/mm <sup>2</sup>
Abrasion resistance (glazed Ceramic)	EN ISO10545-07	IV
Thermal shock resistance	EN ISO 10545-09	It stands the test
Frost resistance	EN ISO 10545-12	It stands the test
UPEC Classification	UPEC Classification	U3S P3 E3 C2

#### CHEMICAL PROPERTIES

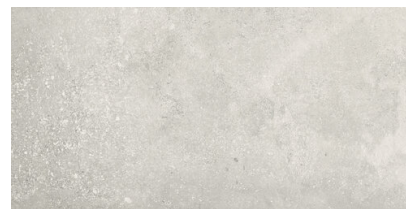
Resistance to acids	EN ISO 10545-13	GHB
Resistance to alcalis	EN ISO 10545-13	GHB
Resistance to cleaning products	EN ISO 10545-13	GHB
Resistance to chemical products in swimming pool water	EN ISO 10545-13	GHB
Stains resistance	EN ISO 10545-14	5

#### ANTI-SLIP CHARACTERISTICS

Slip resistance (Rd)	UNE-EN 16165-C	Class 3
Slip resistance (R)	EN 16165-B	R11
Slip resistance (barefeet)	EN 16165-A	C

## THINK WHITE RECT 30X60

REFERENCE	SIZE (cm)	THICKNESS (mm)	GROUP
<b>A040582</b>	30X60	8,30	PC BIA GL



### DIMENSIONS AND SURFACE PROPERTIES

Size, thickness, side straightness, flatness, orthogonality	UNE-EN 14411	It accomplished all requirements
---	--------------	----------------------------------

### PHYSICAL PROPERTIES

Water absorption capacity	EN ISO 10545-03	< 0,5%
Flexion resistance	EN ISO 10545-04	=> 35 N/mm <sup>2</sup>
Abrasion resistance (glazed Ceramic)	EN ISO10545-07	IV
Thermal shock resistance	EN ISO 10545-09	It stands the test
Frost resistance	EN ISO 10545-12	It stands the test
UPEC Classification	UPEC Classification	U3S P3 E3 C2

### CHEMICAL PROPERTIES

Resistance to acids	EN ISO 10545-13	GLA
Resistance to alcalis	EN ISO 10545-13	GHA
Resistance to cleaning products	EN ISO 10545-13	GA
Resistance to chemical products in swimming pool water	EN ISO 10545-13	GA
Stains resistance	EN ISO 10545-14	3

### ANTI-SLIP CHARACTERISTICS

Slip resistance (R)	EN 16165-B	R10
Slip resistance (barefeet)	EN 16165-A	B





## M-STICK THINK WHITE 30X30

REFERENCE	SIZE (cm)	THICKNESS (mm)	GROUP
<b>A040339</b>	30X30	9,20	PC BIA GL

### DIMENSIONS AND SURFACE PROPERTIES

### PHYSICAL PROPERTIES

Frost resistance

EN ISO 10545-12

It stands the test

### CHEMICAL PROPERTIES

# APE

best for you



## MOSAICO THINK WHITE 30X30 (5X5)

REFERENCE	SIZE (cm)	THICKNESS (mm)	GROUP
<b>A040359</b>	30X30	0,00	PC BIA GL

### DIMENSIONS AND SURFACE PROPERTIES

### PHYSICAL PROPERTIES

Frost resistance

EN ISO 10545-12

It stands the test

### CHEMICAL PROPERTIES

# APE

best for you



## MALLA THINK WHITE 29X27

REFERENCE	SIZE (cm)	THICKNESS (mm)	GROUP
<b>A040355</b>	29X27	0,00	PC BIA GL

### DIMENSIONS AND SURFACE PROPERTIES

### PHYSICAL PROPERTIES

Frost resistance

EN ISO 10545-12

It stands the test

### CHEMICAL PROPERTIES

## PELDAÑO RECTO ANT. C3 THINK WHITE 33X120

REFERENCE	SIZE (cm)	THICKNESS (mm)	GROUP
<b>A041340</b>	33X120	32,30	EXTRUSI



### DIMENSIONS AND SURFACE PROPERTIES

### PHYSICAL PROPERTIES

Frost resistance	EN ISO 10545-12	It stands the test
------------------	-----------------	--------------------

### CHEMICAL PROPERTIES

### ANTI-SLIP CHARACTERISTICS

Slip resistance (Rd)	UNE-EN 16165-C	Class 3
Slip resistance (R)	EN 16165-B	R11

## THINK GREY RECT 60X120

REFERENCE	SIZE (cm)	THICKNESS (mm)	GROUP
<b>A040329</b>	60X120	8,90	PC BIA GL



### DIMENSIONS AND SURFACE PROPERTIES

Size, thickness, side straightness, flatness, orthogonality	UNE-EN 14411	It accomplished all requirements
---	--------------	----------------------------------

### PHYSICAL PROPERTIES

Water absorption capacity	EN ISO 10545-03	< 0,5%
Flexion resistance	EN ISO 10545-04	=> 35 N/mm <sup>2</sup>
Abrasion resistance (glazed Ceramic)	EN ISO 10545-07	IV
Thermal shock resistance	EN ISO 10545-09	It stands the test
Frost resistance	EN ISO 10545-12	It stands the test
UPEC Classification	UPEC Classification	U3S P3 E3 C2

### CHEMICAL PROPERTIES

Resistance to acids	EN ISO 10545-13	GLA
Resistance to alkalis	EN ISO 10545-13	GHA
Resistance to cleaning products	EN ISO 10545-13	GA
Resistance to chemical products in swimming pool water	EN ISO 10545-13	GA
Stains resistance	EN ISO 10545-14	3

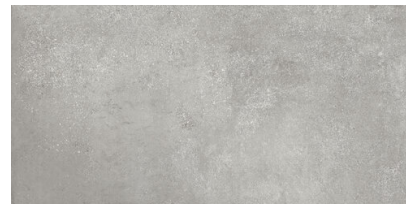
### ANTI-SLIP CHARACTERISTICS

Slip resistance (R)	EN 16165-B	R10
Slip resistance (barefeet)	EN 16165-A	B

## ANTI-SLIP THINK GREY RECT

### 60X120

REFERENCE	SIZE (cm)	THICKNESS (mm)	GROUP
<b>A040333</b>	60X120	8,90	PC BIA GL



#### DIMENSIONS AND SURFACE PROPERTIES

Size, thickness, side straightness, flatness, orthogonality	UNE-EN 14411	It accomplished all requirements
---	--------------	----------------------------------

#### PHYSICAL PROPERTIES

Water absorption capacity	EN ISO 10545-03	< 0,5%
Flexion resistance	EN ISO 10545-04	=> 35 N/mm <sup>2</sup>
Abrasion resistance (glazed Ceramic)	EN ISO10545-07	IV
Thermal shock resistance	EN ISO 10545-09	It stands the test
Cracking resistance	EN ISO 10545-11	It stands the test
Frost resistance	EN ISO 10545-12	It stands the test
UPEC Classification	UPEC Classification	U3S P3 E3 C2

#### CHEMICAL PROPERTIES

Resistance to acids	EN ISO 10545-13	GHB
Resistance to alcalis	EN ISO 10545-13	GHB
Resistance to cleaning products	EN ISO 10545-13	GHB
Resistance to chemical products in swimming pool water	EN ISO 10545-13	GHB
Stains resistance	EN ISO 10545-14	3

#### ANTI-SLIP CHARACTERISTICS

Slip resistance (Rd)	UNE-EN 16165-C	Class 3
Slip resistance (R)	EN 16165-B	R11
Slip resistance (barefeet)	EN 16165-A	C



## THINK GREY RECT 100X100

REFERENCE	SIZE (cm)	THICKNESS (mm)	GROUP
<b>A041109</b>	100X100	10,00	PC BIA GL

### DIMENSIONS AND SURFACE PROPERTIES

Size, thickness, side straightness, flatness, orthogonality      UNE-EN 14411      It accomplished all requirements

### PHYSICAL PROPERTIES

Water absorption capacity	EN ISO 10545-03	< 0,5%
Flexion resistance	EN ISO 10545-04	=> 35 N/mm <sup>2</sup>
Abrasion resistance (glazed Ceramic)	EN ISO10545-07	IV
Thermal shock resistance	EN ISO 10545-09	It stands the test
Frost resistance	EN ISO 10545-12	It stands the test
UPEC Classification	UPEC Classification	U3S P3 E3 C2

### CHEMICAL PROPERTIES

Resistance to acids	EN ISO 10545-13	GLA
Resistance to alcalis	EN ISO 10545-13	GLA
Resistance to cleaning products	EN ISO 10545-13	GA
Resistance to chemical products in swimming pool water	EN ISO 10545-13	GA
Stains resistance	EN ISO 10545-14	3

### ANTI-SLIP CHARACTERISTICS

Slip resistance (R)	EN 16165-B	R10
Slip resistance (barefeet)	EN 16165-A	B

# APE

best for you

## HIGH THICKNESS THINK GREY

### RECT 100X100

REFERENCE	SIZE (cm)	THICKNESS (mm)	GROUP
<b>A041113</b>	100X100	19,40	PC BIA GL



#### DIMENSIONS AND SURFACE PROPERTIES

Size, thickness, side straightness, flatness, orthogonality	UNE-EN 14411	It accomplished all requirements
---	--------------	----------------------------------

#### PHYSICAL PROPERTIES

Water absorption capacity	EN ISO 10545-03	< 0,5%
Flexion resistance	EN ISO 10545-04	=> 35 N/mm <sup>2</sup>
Abrasion resistance (glazed Ceramic)	EN ISO10545-07	IV
Thermal shock resistance	EN ISO 10545-09	It stands the test
Cracking resistance	EN ISO 10545-11	It stands the test
Frost resistance	EN ISO 10545-12	It stands the test
UPEC Classification	UPEC Classification	U3S P3 E3 C2

#### CHEMICAL PROPERTIES

Resistance to acids	EN ISO 10545-13	GLA
Resistance to alcalis	EN ISO 10545-13	GHA
Resistance to cleaning products	EN ISO 10545-13	GA
Resistance to chemical products in swimming pool water	EN ISO 10545-13	GA
Stains resistance	EN ISO 10545-14	3

#### ANTI-SLIP CHARACTERISTICS

Slip resistance (Rd)	UNE-EN 16165-C	Class 3
Slip resistance (R)	EN 16165-B	R11
Slip resistance (barefeet)	EN 16165-A	C





## THINK GREY RECT 60X60

REFERENCE	SIZE (cm)	THICKNESS (mm)	GROUP
<b>A040575</b>	60X60	8,90	PC BIA GL

### DIMENSIONS AND SURFACE PROPERTIES

Size, thickness, side straightness, flatness, orthogonality	UNE-EN 14411	It accomplished all requirements
---	--------------	----------------------------------

### PHYSICAL PROPERTIES

Water absorption capacity	EN ISO 10545-03	< 0,5%
Flexion resistance	EN ISO 10545-04	=> 35 N/mm <sup>2</sup>
Abrasion resistance (glazed Ceramic)	EN ISO10545-07	IV
Thermal shock resistance	EN ISO 10545-09	It stands the test
Frost resistance	EN ISO 10545-12	It stands the test
UPEC Classification	UPEC Classification	U3S P3 E3 C2

### CHEMICAL PROPERTIES

Resistance to acids	EN ISO 10545-13	GLA
Resistance to alcalis	EN ISO 10545-13	GHA
Resistance to cleaning products	EN ISO 10545-13	GA
Resistance to chemical products in swimming pool water	EN ISO 10545-13	GA
Stains resistance	EN ISO 10545-14	3

### ANTI-SLIP CHARACTERISTICS

Slip resistance (R)	EN 16165-B	R10
Slip resistance (barefeet)	EN 16165-A	B

## THINK GREY RECT 30X60

REFERENCE	SIZE (cm)	THICKNESS (mm)	GROUP
<b>A040584</b>	30X60	8,30	PC BIA GL



### DIMENSIONS AND SURFACE PROPERTIES

Size, thickness, side straightness, flatness, orthogonality	UNE-EN 14411	It accomplished all requirements
---	--------------	----------------------------------

### PHYSICAL PROPERTIES

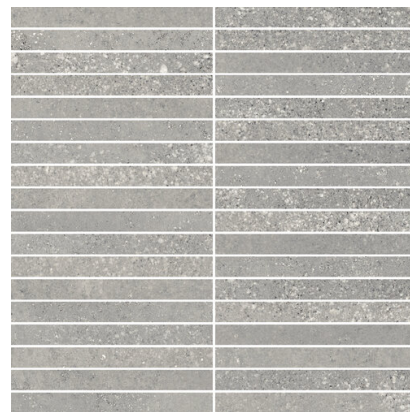
Water absorption capacity	EN ISO 10545-03	< 0,5%
Flexion resistance	EN ISO 10545-04	=> 35 N/mm <sup>2</sup>
Abrasion resistance (glazed Ceramic)	EN ISO10545-07	IV
Thermal shock resistance	EN ISO 10545-09	It stands the test
Frost resistance	EN ISO 10545-12	It stands the test
UPEC Classification	UPEC Classification	U3S P3 E3 C2

### CHEMICAL PROPERTIES

Resistance to acids	EN ISO 10545-13	GLA
Resistance to alcalis	EN ISO 10545-13	GHA
Resistance to cleaning products	EN ISO 10545-13	GA
Resistance to chemical products in swimming pool water	EN ISO 10545-13	GA
Stains resistance	EN ISO 10545-14	3

### ANTI-SLIP CHARACTERISTICS

Slip resistance (R)	EN 16165-B	R10
Slip resistance (barefeet)	EN 16165-A	B



## M-STICK THINK GREY 30X30

REFERENCE	SIZE (cm)	THICKNESS (mm)	GROUP
<b>A040341</b>	30X30	9,20	PC BIA GL

### DIMENSIONS AND SURFACE PROPERTIES

### PHYSICAL PROPERTIES

Frost resistance

EN ISO 10545-12

It stands the test

### CHEMICAL PROPERTIES



## MOSAICO THINK GREY 30X30 (5X5)

REFERENCE	SIZE (cm)	THICKNESS (mm)	GROUP
<b>A040361</b>	30X30	0,00	PC BIA GL

### DIMENSIONS AND SURFACE PROPERTIES

### PHYSICAL PROPERTIES

Frost resistance

EN ISO 10545-12

It stands the test

### CHEMICAL PROPERTIES

# APE

best for you



## MALLA THINK GREY 29X27

REFERENCE	SIZE (cm)	THICKNESS (mm)	GROUP
<b>A040357</b>	29X27	9,50	PC BIA GL

### DIMENSIONS AND SURFACE PROPERTIES

### PHYSICAL PROPERTIES

Frost resistance

EN ISO 10545-12

It stands the test

### CHEMICAL PROPERTIES

## PELDAÑO RECTO ANT. C3 THINK GREY 33X120

REFERENCE	SIZE (cm)	THICKNESS (mm)	GROUP
<b>A041338</b>	33X120	32,50	EXTRUSI



### DIMENSIONS AND SURFACE PROPERTIES

### PHYSICAL PROPERTIES

Frost resistance	EN ISO 10545-12	It stands the test
------------------	-----------------	--------------------

### CHEMICAL PROPERTIES

### ANTI-SLIP CHARACTERISTICS

Slip resistance (Rd)	UNE-EN 16165-C	Class 3
Slip resistance (R)	EN 16165-B	R11

## THINK COAL RECT 60X120

REFERENCE	SIZE (cm)	THICKNESS (mm)	GROUP
<b>A040330</b>	60X120	8,90	PC BIA GL



### DIMENSIONS AND SURFACE PROPERTIES

Size, thickness, side straightness, flatness, orthogonality	UNE-EN 14411	It accomplished all requirements
---	--------------	----------------------------------

### PHYSICAL PROPERTIES

Water absorption capacity	EN ISO 10545-03	< 0,5%
Flexion resistance	EN ISO 10545-04	=> 35 N/mm <sup>2</sup>
Abrasion resistance (glazed Ceramic)	EN ISO10545-07	IV
Thermal shock resistance	EN ISO 10545-09	It stands the test
Frost resistance	EN ISO 10545-12	It stands the test
UPEC Classification	UPEC Classification	U3S P3 E3 C2

### CHEMICAL PROPERTIES

Resistance to acids	EN ISO 10545-13	GLA
Resistance to alcalis	EN ISO 10545-13	GHA
Resistance to cleaning products	EN ISO 10545-13	GA
Resistance to chemical products in swimming pool water	EN ISO 10545-13	GA
Stains resistance	EN ISO 10545-14	3

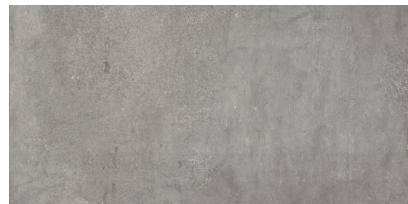
### ANTI-SLIP CHARACTERISTICS

Slip resistance (R)	EN 16165-B	R10
Slip resistance (barefeet)	EN 16165-A	B

## ANTI-SLIP THINK COAL RECT

### 60X120

REFERENCE	SIZE (cm)	THICKNESS (mm)	GROUP
<b>A040334</b>	60X120	8,90	PC BIA GL



#### DIMENSIONS AND SURFACE PROPERTIES

Size, thickness, side straightness, flatness, orthogonality	UNE-EN 14411	It accomplished all requirements
---	--------------	----------------------------------

#### PHYSICAL PROPERTIES

Water absorption capacity	EN ISO 10545-03	< 0,5%
Flexion resistance	EN ISO 10545-04	=> 35 N/mm <sup>2</sup>
Abrasion resistance (glazed Ceramic)	EN ISO10545-07	IV
Thermal shock resistance	EN ISO 10545-09	It stands the test
Cracking resistance	EN ISO 10545-11	It stands the test
Frost resistance	EN ISO 10545-12	It stands the test
UPEC Classification	UPEC Classification	U3S P3 E3 C2

#### CHEMICAL PROPERTIES

Resistance to acids	EN ISO 10545-13	GHB
Resistance to alcalis	EN ISO 10545-13	GHB
Resistance to cleaning products	EN ISO 10545-13	GHB
Resistance to chemical products in swimming pool water	EN ISO 10545-13	GHB
Stains resistance	EN ISO 10545-14	3

#### ANTI-SLIP CHARACTERISTICS

Slip resistance (Rd)	UNE-EN 16165-C	Class 3
Slip resistance (R)	EN 16165-B	R11
Slip resistance (barefeet)	EN 16165-A	C





## THINK COAL RECT 100X100

REFERENCE	SIZE (cm)	THICKNESS (mm)	GROUP
<b>A041110</b>	100X100	10,00	PC BIA GL

### DIMENSIONS AND SURFACE PROPERTIES

Size, thickness, side straightness, flatness, orthogonality      UNE-EN 14411      It accomplished all requirements

### PHYSICAL PROPERTIES

Water absorption capacity	EN ISO 10545-03	< 0,5%
Flexion resistance	EN ISO 10545-04	=> 35 N/mm <sup>2</sup>
Abrasion resistance (glazed Ceramic)	EN ISO10545-07	IV
Thermal shock resistance	EN ISO 10545-09	It stands the test
Frost resistance	EN ISO 10545-12	It stands the test
UPEC Classification	UPEC Classification	U3S P3 E3 C2

### CHEMICAL PROPERTIES

Resistance to acids	EN ISO 10545-13	GLA
Resistance to alcalis	EN ISO 10545-13	GLA
Resistance to cleaning products	EN ISO 10545-13	GA
Resistance to chemical products in swimming pool water	EN ISO 10545-13	GA
Stains resistance	EN ISO 10545-14	3

### ANTI-SLIP CHARACTERISTICS

Slip resistance (R)	EN 16165-B	R10
Slip resistance (barefeet)	EN 16165-A	B

## HIGH THICKNESS THINK COAL

### RECT 100X100



REFERENCE	SIZE (cm)	THICKNESS (mm)	GROUP
<b>A041114</b>	100X100	19,80	PC BIA GL

#### DIMENSIONS AND SURFACE PROPERTIES

Size, thickness, side straightness, flatness, orthogonality	UNE-EN 14411	It accomplished all requirements
---	--------------	----------------------------------

#### PHYSICAL PROPERTIES

Water absorption capacity	EN ISO 10545-03	< 0,5%
Flexion resistance	EN ISO 10545-04	=> 35 N/mm <sup>2</sup>
Abrasion resistance (glazed Ceramic)	EN ISO10545-07	IV
Thermal shock resistance	EN ISO 10545-09	It stands the test
Cracking resistance	EN ISO 10545-11	It stands the test
Frost resistance	EN ISO 10545-12	It stands the test
UPEC Classification	UPEC Classification	U3S P3 E3 C2

#### CHEMICAL PROPERTIES

Resistance to acids	EN ISO 10545-13	GLA
Resistance to alcalis	EN ISO 10545-13	GHA
Resistance to cleaning products	EN ISO 10545-13	GA
Resistance to chemical products in swimming pool water	EN ISO 10545-13	GA
Stains resistance	EN ISO 10545-14	3

#### ANTI-SLIP CHARACTERISTICS

Slip resistance (Rd)	UNE-EN 16165-C	Class 3
Slip resistance (R)	EN 16165-B	R11
Slip resistance (barefeet)	EN 16165-A	C



## THINK COAL RECT 60X60

REFERENCE	SIZE (cm)	THICKNESS (mm)	GROUP
<b>A040576</b>	60X60	8,70	PC BIA GL

### DIMENSIONS AND SURFACE PROPERTIES

Size, thickness, side straightness, flatness, orthogonality      UNE-EN 14411      It accomplished all requirements

### PHYSICAL PROPERTIES

Water absorption capacity	EN ISO 10545-03	< 0,5%
Flexion resistance	EN ISO 10545-04	=> 35 N/mm <sup>2</sup>
Abrasion resistance (glazed Ceramic)	EN ISO10545-07	IV
Thermal shock resistance	EN ISO 10545-09	It stands the test
Frost resistance	EN ISO 10545-12	It stands the test
UPEC Classification	UPEC Classification	U3S P3 E3 C2

### CHEMICAL PROPERTIES

Resistance to acids	EN ISO 10545-13	GLA
Resistance to alcalis	EN ISO 10545-13	GHA
Resistance to cleaning products	EN ISO 10545-13	GA
Resistance to chemical products in swimming pool water	EN ISO 10545-13	GA
Stains resistance	EN ISO 10545-14	3

### ANTI-SLIP CHARACTERISTICS

Slip resistance (R)	EN 16165-B	R10
Slip resistance (barefeet)	EN 16165-A	B

## THINK COAL RECT 30X60

REFERENCE	SIZE (cm)	THICKNESS (mm)	GROUP
<b>A040585</b>	30X60	8,30	PC BIA GL



### DIMENSIONS AND SURFACE PROPERTIES

Size, thickness, side straightness, flatness, orthogonality	UNE-EN 14411	It accomplished all requirements
---	--------------	----------------------------------

### PHYSICAL PROPERTIES

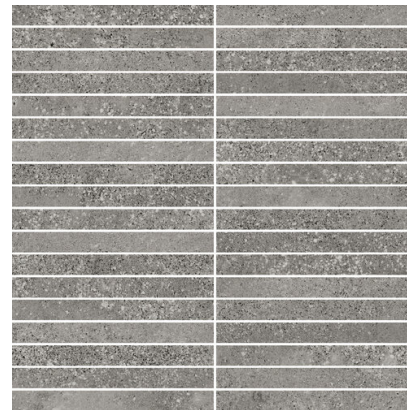
Water absorption capacity	EN ISO 10545-03	< 0,5%
Flexion resistance	EN ISO 10545-04	=> 35 N/mm <sup>2</sup>
Abrasion resistance (glazed Ceramic)	EN ISO10545-07	IV
Thermal shock resistance	EN ISO 10545-09	It stands the test
Frost resistance	EN ISO 10545-12	It stands the test
UPEC Classification	UPEC Classification	U3S P3 E3 C2

### CHEMICAL PROPERTIES

Resistance to acids	EN ISO 10545-13	GLA
Resistance to alcalis	EN ISO 10545-13	GHA
Resistance to cleaning products	EN ISO 10545-13	GA
Resistance to chemical products in swimming pool water	EN ISO 10545-13	GA
Stains resistance	EN ISO 10545-14	3

### ANTI-SLIP CHARACTERISTICS

Slip resistance (R)	EN 16165-B	R10
Slip resistance (barefeet)	EN 16165-A	B



## M-STICK THINK COAL 30X30

REFERENCE	SIZE (cm)	THICKNESS (mm)	GROUP
<b>A040342</b>	30X30	9,20	PC BIA GL

### DIMENSIONS AND SURFACE PROPERTIES

### PHYSICAL PROPERTIES

Frost resistance

EN ISO 10545-12

It stands the test

### CHEMICAL PROPERTIES

# APE

best for you



## MOSAICO THINK COAL 30X30 (5X5)

REFERENCE	SIZE (cm)	THICKNESS (mm)	GROUP
<b>A040362</b>	30X30	0,00	PC BIA GL

### DIMENSIONS AND SURFACE PROPERTIES

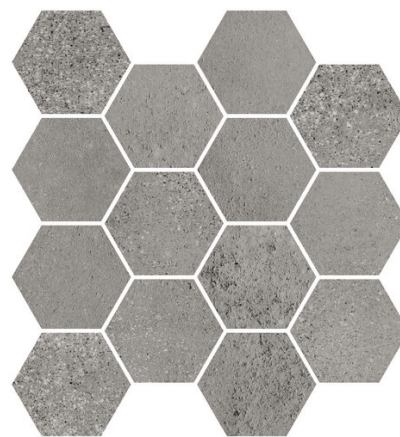
### PHYSICAL PROPERTIES

Frost resistance

EN ISO 10545-12

It stands the test

### CHEMICAL PROPERTIES



## MALLA THINK COAL 29X27

REFERENCE	SIZE (cm)	THICKNESS (mm)	GROUP
<b>A040358</b>	29X27	0,00	PC BIA GL

### DIMENSIONS AND SURFACE PROPERTIES

### PHYSICAL PROPERTIES

Frost resistance

EN ISO 10545-12

It stands the test

### CHEMICAL PROPERTIES

## THINK TAUPE RECT 60X120

REFERENCE	SIZE (cm)	THICKNESS (mm)	GROUP
<b>A040328</b>	60X120	8,80	PC BIA GL



### DIMENSIONS AND SURFACE PROPERTIES

Size, thickness, side straightness, flatness, orthogonality	UNE-EN 14411	It accomplished all requirements
---	--------------	----------------------------------

### PHYSICAL PROPERTIES

Water absorption capacity	EN ISO 10545-03	< 0,5%
Flexion resistance	EN ISO 10545-04	=> 35 N/mm <sup>2</sup>
Abrasion resistance (glazed Ceramic)	EN ISO 10545-07	IV
Thermal shock resistance	EN ISO 10545-09	It stands the test
Frost resistance	EN ISO 10545-12	It stands the test
UPEC Classification	UPEC Classification	U3S P3 E3 C2

### CHEMICAL PROPERTIES

Resistance to acids	EN ISO 10545-13	GLA
Resistance to alcalis	EN ISO 10545-13	GHA
Resistance to cleaning products	EN ISO 10545-13	GA
Resistance to chemical products in swimming pool water	EN ISO 10545-13	GA
Stains resistance	EN ISO 10545-14	3

### ANTI-SLIP CHARACTERISTICS

Slip resistance (R)	EN 16165-B	R10
Slip resistance (barefeet)	EN 16165-A	B



## ANTI-SLIP THINK TAUPE RECT

### 60X120

REFERENCE	SIZE (cm)	THICKNESS (mm)	GROUP
<b>A040332</b>	60X120	8,90	PC BIA GL



#### DIMENSIONS AND SURFACE PROPERTIES

Size, thickness, side straightness, flatness, orthogonality	UNE-EN 14411	It accomplished all requirements
---	--------------	----------------------------------

#### PHYSICAL PROPERTIES

Water absorption capacity	EN ISO 10545-03	< 0,5%
Flexion resistance	EN ISO 10545-04	=> 35 N/mm <sup>2</sup>
Abrasion resistance (glazed Ceramic)	EN ISO10545-07	IV
Thermal shock resistance	EN ISO 10545-09	It stands the test
Cracking resistance	EN ISO 10545-11	It stands the test
Frost resistance	EN ISO 10545-12	It stands the test
UPEC Classification	UPEC Classification	U3S P3 E3 C2

#### CHEMICAL PROPERTIES

Resistance to acids	EN ISO 10545-13	GHB
Resistance to alcalis	EN ISO 10545-13	GHB
Resistance to cleaning products	EN ISO 10545-13	GHB
Resistance to chemical products in swimming pool water	EN ISO 10545-13	GHB
Stains resistance	EN ISO 10545-14	3

#### ANTI-SLIP CHARACTERISTICS

Slip resistance (Rd)	UNE-EN 16165-C	Class 3
Slip resistance (R)	EN 16165-B	R11
Slip resistance (barefeet)	EN 16165-A	C



## THINK TAUPE RECT 100X100

REFERENCE	SIZE (cm)	THICKNESS (mm)	GROUP
<b>A041111</b>	100X100	10,00	PC BIA GL

### DIMENSIONS AND SURFACE PROPERTIES

Size, thickness, side straightness, flatness, orthogonality      UNE-EN 14411      It accomplished all requirements

### PHYSICAL PROPERTIES

Water absorption capacity	EN ISO 10545-03	< 0,5%
Flexion resistance	EN ISO 10545-04	=> 35 N/mm <sup>2</sup>
Abrasion resistance (glazed Ceramic)	EN ISO10545-07	IV
Thermal shock resistance	EN ISO 10545-09	It stands the test
Frost resistance	EN ISO 10545-12	It stands the test
UPEC Classification	UPEC Classification	U3S P3 E3 C2

### CHEMICAL PROPERTIES

Resistance to acids	EN ISO 10545-13	GLA
Resistance to alcalis	EN ISO 10545-13	GLA
Resistance to cleaning products	EN ISO 10545-13	GA
Resistance to chemical products in swimming pool water	EN ISO 10545-13	GA
Stains resistance	EN ISO 10545-14	3

### ANTI-SLIP CHARACTERISTICS

Slip resistance (R)	EN 16165-B	R10
Slip resistance (barefeet)	EN 16165-A	B

## ANTI-SLIP THINK TAUPE RECT 100X100



REFERENCE	SIZE (cm)	THICKNESS (mm)	GROUP
<b>A041721</b>	100X100	9,70	PC BIA GL

### DIMENSIONS AND SURFACE PROPERTIES

Size, thickness, side straightness, flatness, orthogonality	UNE-EN 14411	It accomplished all requirements
---	--------------	----------------------------------

### PHYSICAL PROPERTIES

Water absorption capacity	EN ISO 10545-03	< 0,5%
Flexion resistance	EN ISO 10545-04	=> 35 N/mm <sup>2</sup>
Abrasion resistance (glazed Ceramic)	EN ISO10545-07	IV
Thermal shock resistance	EN ISO 10545-09	It stands the test
Frost resistance	EN ISO 10545-12	It stands the test
UPEC Classification	UPEC Classification	U3S P3 E3 C2

### CHEMICAL PROPERTIES

Resistance to acids	EN ISO 10545-13	GLA
Resistance to alcalis	EN ISO 10545-13	GHA
Resistance to cleaning products	EN ISO 10545-13	GA
Resistance to chemical products in swimming pool water	EN ISO 10545-13	GA
Stains resistance	EN ISO 10545-14	3

### ANTI-SLIP CHARACTERISTICS

Slip resistance (Rd)	UNE-EN 16165-C	Class 3
Slip resistance (R)	EN 16165-B	R11
Slip resistance (barefeet)	EN 16165-A	C

## HIGH THICKNESS THINK TAUPE

### RECT 100X100



REFERENCE	SIZE (cm)	THICKNESS (mm)	GROUP
<b>A041115</b>	100X100	19,40	PC BIA GL

#### DIMENSIONS AND SURFACE PROPERTIES

Size, thickness, side straightness, flatness, orthogonality	UNE-EN 14411	It accomplished all requirements
---	--------------	----------------------------------

#### PHYSICAL PROPERTIES

Water absorption capacity	EN ISO 10545-03	< 0,5%
Flexion resistance	EN ISO 10545-04	=> 35 N/mm <sup>2</sup>
Abrasion resistance (glazed Ceramic)	EN ISO10545-07	IV
Thermal shock resistance	EN ISO 10545-09	It stands the test
Cracking resistance	EN ISO 10545-11	It stands the test
Frost resistance	EN ISO 10545-12	It stands the test
UPEC Classification	UPEC Classification	U3S P3 E3 C2

#### CHEMICAL PROPERTIES

Resistance to acids	EN ISO 10545-13	GLA
Resistance to alcalis	EN ISO 10545-13	GHA
Resistance to cleaning products	EN ISO 10545-13	GA
Resistance to chemical products in swimming pool water	EN ISO 10545-13	GA
Stains resistance	EN ISO 10545-14	3

#### ANTI-SLIP CHARACTERISTICS

Slip resistance (Rd)	UNE-EN 16165-C	Class 3
Slip resistance (R)	EN 16165-B	R11
Slip resistance (barefeet)	EN 16165-A	C



## THINK TAUPE RECT 60X60

REFERENCE	SIZE (cm)	THICKNESS (mm)	GROUP
<b>A040574</b>	60X60	9,00	PC BIA GL

### DIMENSIONS AND SURFACE PROPERTIES

Size, thickness, side straightness, flatness, orthogonality      UNE-EN 14411      It accomplished all requirements

### PHYSICAL PROPERTIES

Water absorption capacity	EN ISO 10545-03	< 0,5%
Flexion resistance	EN ISO 10545-04	=> 35 N/mm <sup>2</sup>
Abrasion resistance (glazed Ceramic)	EN ISO 10545-07	IV
Thermal shock resistance	EN ISO 10545-09	It stands the test
Frost resistance	EN ISO 10545-12	It stands the test
UPEC Classification	UPEC Classification	U3S P3 E3 C2

### CHEMICAL PROPERTIES

Resistance to acids	EN ISO 10545-13	GLA
Resistance to alcalis	EN ISO 10545-13	GHA
Resistance to cleaning products	EN ISO 10545-13	GA
Resistance to chemical products in swimming pool water	EN ISO 10545-13	GA
Stains resistance	EN ISO 10545-14	3

### ANTI-SLIP CHARACTERISTICS

Slip resistance (R)	EN 16165-B	R10
Slip resistance (barefeet)	EN 16165-A	B

## ANTI-SLIP THINK TAUPE RECT

### 60X60



REFERENCE	SIZE (cm)	THICKNESS (mm)	GROUP
<b>A041334</b>	60X60	8,80	PC BIA GL

#### DIMENSIONS AND SURFACE PROPERTIES

Size, thickness, side straightness, flatness, orthogonality	UNE-EN 14411	It accomplished all requirements
---	--------------	----------------------------------

#### PHYSICAL PROPERTIES

Water absorption capacity	EN ISO 10545-03	< 0,5%
Flexion resistance	EN ISO 10545-04	=> 35 N/mm <sup>2</sup>
Abrasion resistance (glazed Ceramic)	EN ISO10545-07	IV
Thermal shock resistance	EN ISO 10545-09	It stands the test
Frost resistance	EN ISO 10545-12	It stands the test
UPEC Classification	UPEC Classification	U3S P3 E3 C2

#### CHEMICAL PROPERTIES

Resistance to acids	EN ISO 10545-13	GHB
Resistance to alcalis	EN ISO 10545-13	GHB
Resistance to cleaning products	EN ISO 10545-13	GHB
Resistance to chemical products in swimming pool water	EN ISO 10545-13	GHB
Stains resistance	EN ISO 10545-14	5

#### ANTI-SLIP CHARACTERISTICS

Slip resistance (Rd)	UNE-EN 16165-C	Class 3
Slip resistance (R)	EN 16165-B	R11
Slip resistance (barefeet)	EN 16165-A	C

## THINK TAUPE RECT 30X60

REFERENCE	SIZE (cm)	THICKNESS (mm)	GROUP
<b>A040583</b>	30X60	8,70	PC BIA GL



### DIMENSIONS AND SURFACE PROPERTIES

Size, thickness, side straightness, flatness, orthogonality	UNE-EN 14411	It accomplished all requirements
---	--------------	----------------------------------

### PHYSICAL PROPERTIES

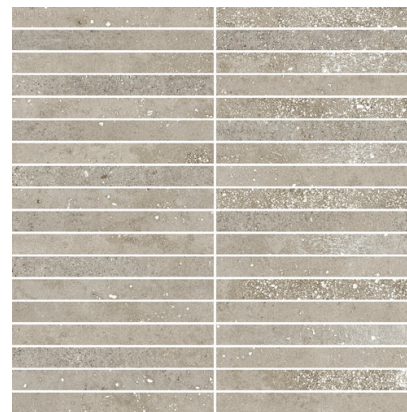
Water absorption capacity	EN ISO 10545-03	< 0,5%
Flexion resistance	EN ISO 10545-04	=> 35 N/mm <sup>2</sup>
Abrasion resistance (glazed Ceramic)	EN ISO10545-07	IV
Thermal shock resistance	EN ISO 10545-09	It stands the test
Frost resistance	EN ISO 10545-12	It stands the test
UPEC Classification	UPEC Classification	U3S P3 E3 C2

### CHEMICAL PROPERTIES

Resistance to acids	EN ISO 10545-13	GLA
Resistance to alcalis	EN ISO 10545-13	GHA
Resistance to cleaning products	EN ISO 10545-13	GA
Resistance to chemical products in swimming pool water	EN ISO 10545-13	GA
Stains resistance	EN ISO 10545-14	3

### ANTI-SLIP CHARACTERISTICS

Slip resistance (R)	EN 16165-B	R10
Slip resistance (barefeet)	EN 16165-A	B



## M-STICK THINK TAUPE 30X30

REFERENCE	SIZE (cm)	THICKNESS (mm)	GROUP
<b>A040340</b>	30X30	9,20	PC BIA GL

### DIMENSIONS AND SURFACE PROPERTIES

### PHYSICAL PROPERTIES

Frost resistance

EN ISO 10545-12

It stands the test

### CHEMICAL PROPERTIES



# APE

best for you



## MOSAICO THINK TAUPE 30X30 (5X5)

REFERENCE	SIZE (cm)	THICKNESS (mm)	GROUP
<b>A040360</b>	30X30	0,00	PC BIA GL

### DIMENSIONS AND SURFACE PROPERTIES

### PHYSICAL PROPERTIES

Frost resistance

EN ISO 10545-12

It stands the test

### CHEMICAL PROPERTIES

# APE

best for you



## MALLA THINK TAUPE 29X27

REFERENCE	SIZE (cm)	THICKNESS (mm)	GROUP
<b>A040356</b>	29X27	0,00	PC BIA GL

### DIMENSIONS AND SURFACE PROPERTIES

### PHYSICAL PROPERTIES

Frost resistance

EN ISO 10545-12

It stands the test

### CHEMICAL PROPERTIES

## PELDAÑO RECTO ANT. C3 THINK TAUPE 33X120

REFERENCE	SIZE (cm)	THICKNESS (mm)	GROUP
<b>A041339</b>	33X120	32,50	EXTRUSI



### DIMENSIONS AND SURFACE PROPERTIES

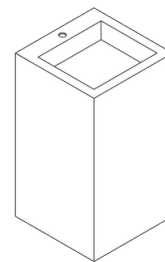
### PHYSICAL PROPERTIES

Frost resistance	EN ISO 10545-12	It stands the test
------------------	-----------------	--------------------

### CHEMICAL PROPERTIES

### ANTI-SLIP CHARACTERISTICS

Slip resistance (Rd)	UNE-EN 16165-C	Class 3
Slip resistance (R)	EN 16165-B	R11



## LAVABO DE PIE ROMA

REFERENCE	SIZE (cm)	THICKNESS (mm)	GROUP
<b>A040867</b>		0,00	PC BIA GL

### DIMENSIONS AND SURFACE PROPERTIES

### PHYSICAL PROPERTIES

Frost resistance

EN ISO 10545-12

It stands the test

### CHEMICAL PROPERTIES